



NEWSLETTER

THE SOCIETY OF ARCHITECTURAL HISTORIANS

SAH NOTICES

1989 Annual Meeting—Montreal, Canada (April 12-16). Elisabeth Blair MacDougall, Harvard University (retired), will be general chair of the meeting. Phyllis Lambert, Canadian Centre for Architecture, will serve as local chairman. Headquarters for the meeting will be the Meridien Hotel. The final printed program (with pre-registration form and hotel reservation form) has been sent to the membership. Members are reminded that this program should be brought with them to the meeting in April. Please note deadlines for the purchase of tickets for tours and other functions, and cut-off dates for reserving rooms at the Meridien Hotel.

1990 Annual Meeting—Boston, Massachusetts (March 28-April 1). Elisabeth Blair MacDougall, Harvard University (retired), will be general chair of the meeting. Keith Morgan, Boston University, will serve as local chairman. Headquarters for the meeting will be the Park Plaza Hotel. A call for papers will be published in the April Newsletter.

1989 Foreign Tour, The English Midlands (June 28 to July 19, 1989). Carol Herselle Krinsky, New York University, will be the leader of this tour. A descriptive brochure on this architectural history study tour will reach the membership this month.

1989 Domestic Tour, Los Angeles, California (tentative dates are September 5-10). Robert Winter, Occidental College, will be the leader of this tour. Details will reach the members in March.

SYMPOSIUM

The Buell Center for the Study of American Architecture at Columbia University is hosting a symposium, **American Architecture and the German Connection**, in conjunction with Columbia University's Deutsches Haus and the Deutscher Akademischer Austauschdienst. The symposium will be held from 9:00 A.M. to 5:30 P.M. on April 7th and 8th. On Friday, April 7th, speakers will address the issues of "The Impact of the

'Rundbogenstil' in the Mid-Nineteenth Century" and "Chicago and the Birth of an American Architecture at the Turn of the Century." On Saturday, April 8th, topics are "Modernism in America before the Exhibition of 'Modern Architecture' at the Museum of Modern Art in 1932" and "The Legacy of the German Emigres after 1933." The symposium is free and open to any interested persons. Please contact the Buell Center for further information: Buell Center for the Study of American Architecture, 400 Avery Hall, Columbia University, New York, NY 10027, (212) 854-7374.

the form of a single-page letter setting forth a brief statement of the project, with attached budget, schedule for completion, professional résumé, and the names of the three persons who may be contacted for references. There are no application forms issued by the Fellowship. Applications should be addressed to the Chairman, Peterson Fellowship Committee, The Athenaeum of Philadelphia, East Washington Square, Philadelphia, Pennsylvania 19106-3794.

EXHIBITIONS

The Wellesley College Museum, Wellesley, Massachusetts 02181, will hold an exhibition in the spring of 1989 entitled: **On the Boards: Drawings by Nineteenth-Century Boston Architects.** The show will include some 100 known and unknown sheets by known and unknown draftsmen from Charles Bulfinch to Ralph Adams Cram. A complete range of architectural graphics will be presented as a "sampler" of the drawings created by local designers of the last century.

The exhibition is curated by James F. O'Gorman, Grace Slack McNeil Professor of American Art at Wellesley; he has also prepared a complete catalogue to be published under the same title by the University of Pennsylvania Press.

The exhibition will open with a symposium on the afternoon of April 15th, 1989. It will run to early June. For information call the Museum at (617) 235-0320.

A major exhibit of the drawings and papers of Robert Mills, who designed some of Washington's best-known monuments and buildings, opened in Washington Jan. 19, 1989. "**Robert Mills, Designs for Democracy**," will be on display through April 2 at the Octagon Museum of the American Institute of Architects. It will feature more than 85 of the South Carolina native's drawings and renderings, many of which have never been displayed publicly. The exhibit will be shown April 23-June 11 at the Columbia Museum of Art in Columbia.

Important Notice to All Members

It is time to appoint an Associate Editor for the *Journal* of the SAH. The Associate Editor will serve a one-year term before becoming Editor. Anyone interested in this position should immediately write to David Bahlman at 1232 Pine Street, Philadelphia, PA 19107, describing qualifications and previous editing experience. Deadline for submission: March 15, 1989.

CORRECTION

Note: The following information in the December Newsletter gave incorrect dates. The correct dates follow: The Athenaeum of Philadelphia announces the Charles E. Peterson Research Fellowships for 1989-1990. Grants range in amount from \$1,000 to \$15,000 for advanced research in early American architecture and building technology prior to 1860 for use during the year June 1, 1989, to May 31, 1990.

—Applications will be accepted between January 1, 1989, and March 1, 1989. Awards will be announced by April 30, 1989.

—Applications should be submitted in

Other locations are to be announced shortly. John Bryan, art historian at the University of South Carolina in Columbia, is guest curator for the show, organized by the American Architectural Foundation. Bryan also has edited a book of essays about Mills, the first native-born American to train for a career in architecture.

Mills, who lived from 1781-1855, was a protégé of Thomas Jefferson's. He designed a number of monuments and buildings in the Washington area, including the Washington National Monument, the U.S. Patent Office and the Treasury Building. He also designed buildings, bridges and canals in his native South Carolina, as well as in Baltimore and Philadelphia. Mills designed the South Caroliniana Library and the Maxcy Monument, both located on USC's campus. Mills' career spanned a critical period in the building and transformation of America and reflects the interaction between the arts and technologies of his time. When Mills died in 1855, he successfully had established his version of the Greek Revival as the style most expressive of the new American political system. "He's one of the unsung heroes of architecture," said Judith Schultz, curator of exhibitions at the Octagon Museum. "Many of his buildings became prototypes for structures all over the country, and he also came up with important innovations for fireproofing and acoustics." For the past four years, the Mills project team has scoured the country and located 5,000 of the architect's documents and 171 drawings in libraries, historical societies and regional and national archives.

CALL FOR PAPERS

The Winterthur Museum solicits papers for a conference **The Material Culture of Gender/The Gender of Material Culture** scheduled for Friday and Saturday, November 10th and 11th, 1989. The conference organizers seek a wide-ranging examination of links between sexuality and material culture. Papers may address any North American subject from the seventeenth century to the twentieth. Potential topics include, but are not limited to: gender and value; roles and identities; the construction of gender; concepts of maleness and femaleness; power and domination; beauty; taboos and fetishes; homosexuality and the arts; domesticity; symbolism; gender in things; and ways material culture informs men's studies and women's studies. Cross-cultural

perspectives are welcome, as are contributions from any discipline. Papers describing works in progress and tentative conclusions are invited. Speakers receive an honorarium plus expenses. Papers will be published. **Written proposals are due March 1, 1989**; acceptances will be announced April 1. Contact Co-Chairs Kenneth Ames or Katharine Martinez, Winterthur Museum, Winterthur, DE 19735.

The sixteenth annual **Carolinas Symposium on British Studies** will be held at the University of North Carolina at Charlotte on October 21 and 22, 1989. The Symposium provides an annual forum for the delivery of scholarly presentations and the exchange of ideas relating to all aspects of British Studies, including history, literature, art and architecture, government, dance, and music. While the Symposium is regionally based in the Southeast, participants are welcome from all parts of the country. The program committee invites proposals for individual papers, full sessions, and panel discussions. A \$250 prize will be awarded for the best paper from among those read at the Symposium and submitted to the evaluation committee by the following May, with the possibility of publication in *Albion*. We also invite submissions for the student paper session from both graduate students and undergraduates, with a prize in each category. **Proposals or papers should be sent by April 15, 1989**, to Betty Young, East Campus Library, Duke University, Durham, North Carolina 27708. All who submit proposals will be notified of the decision of the program committee by early June.

AVISTA, the **Association Villard de Honnecourt for the Interdisciplinary Study of Medieval Technology, Science, and Art**, invites papers on the topic "Transportation as Depicted in Medieval Art and Literature" for presentation at its sessions during the Twenty-Fifth International Congress on Medieval Studies at Kalamazoo, Michigan, from 3-6 May 1990. Possible sub-topics include 1) the credibility of artistic depictions; 2) transport-logistics in military and naval campaigns: the interpretation of chronicle evidence; 3) frequent flyers: miraculous journeys or the **translation** of holy relics; 4) travel on the pilgrimage routes; 5) delivering the goods: merchants and merchandise. Talks are limited to 20 minutes. **Send one-page abstracts**, indicating audio-visual needs, by **September 15, 1989**, to Dr. Barbara M. Kreutz, 238 North Ithan

Avenue, Villanova, PA 19085 (USA). (215) 527-2564.

QUERIES

Information is being sought for the proper restoration of an 1866 chapel in Darien, Connecticut. The chapel is believed to be designed by architect Gage Inslee of New York City. The majority of the edifice was constructed from a very experimental type of concrete block composed of natural cement, the forefather of the more common portland cement. It is believed that the chapel is one of the earliest examples of this construction in the country. If anyone has information on other natural concrete block buildings in their area or has information on Gage Inslee, please contact: Richard Bergmann Architects, 63 Park Street, New Canaan, CT 06840, (203) 966-9505.

Since 1983, the **Historic American Buildings Survey/Historic American Engineering Record (HABS/HAER)** Division has published an annual report that outlines its activities and accomplishments made throughout the year. In January 1989, HABS/HAER will release a report that will detail all activities and achievements made during 1988. If you would like a copy, please write to Jean Yearby, Publications Specialist, HABS/HAER Division (429), National Park Service, P.O. Box 37127, Washington, D.C. 20013-7127, or call her at (202) 343-9628.

The following information was received from **Carl W. Condit**, "I have continued research on the history of the New York skyscraper and have brought the materials up to 1940. Since I have not found a collaborator and have no hope of completing a project of this magnitude, I have deposited the notes in the Archives of the Avery Library, where they are available to any qualified scholar. I have accumulated 250 typewritten pages of notes with a bibliography of 650 entries. I have deposited these notes in the Archives of the Avery Library, Columbia University, where they are available to any qualified scholar with the single stipulation that my name appear under the title page of any publication based on their use, along with that of the author." Carl W. Condit, Professor Emeritus, 9300 Linder Avenue, Morton Grove, Illinois 60053.

The SAH member who responded after the **Vitruvius session** at the **Chicago meeting** with comments on **timber and military equipment**, please write to Thomas Gordon Smith, School of

(Continued on page 7)

THE CANADIAN CENTRE FOR ARCHITECTURE

To welcome members to the Annual Meeting in Montréal Phyllis Lambert, local chairperson, has offered these comments about The Canadian Centre for Architecture of which she is director.

The Canadian Centre for Architecture is a museum and study centre established to further the understanding of architecture and to help broaden public concern for the built environment. Since its founding in 1979, the CCA has assembled collections of architectural documentation which are the basis of its programs of research, publications and exhibitions. These collections comprise one of the most important architectural study collections in existence. As a study centre the CCA welcomes researchers from around the world. Its activities are international in scope and are directed toward architects, scholars and the public. Through a program of exhibitions, the CCA presents a wide range of topics of local and international concern. The CCA sponsors research projects, publications, conferences and participates in bibliographic and conservation programs with other museums and libraries.

The collections of the CCA support its purpose as a centre of advanced research and as a museum. The scope of the **four major research collections** is international in depth and breadth. In the formation of the collections, emphasis has been placed on assembling groups of related documents. They form an interconnected collection of books, prints, drawings and photographs that are concerned with architecture in its largest sense, from conceptual formulation to the shaping of the natural and built environment.

At present the **library** includes over 120,000 volumes on the history, theory and practice of world architecture both past and present. It is one of three major libraries devoted to the subject. Building and continually strengthening a scholarly collection supports advanced research on architecture, as well as related subjects such as gardening, fortifications, theatre design, building technology, and urban planning. Its holdings range from fifteenth century imprints to the present. Two examples of the library's special holdings are the original editions of books on Italian cities from the fifteenth to the nineteenth centuries and a collection of eighteenth and nineteenth century guides to British country houses. The periodical collection is very strong in

both retrospective and current journals, and includes an outstanding collection of rare serials ranging from the earliest architectural journals to those on avant-garde architecture in France, Holland, Germany, Czechoslovakia, Rumania and the Soviet Union in the nineteen twenties.

Architectural drawings, from initial conceptual sketches to working contract drawings, are unique documents, providing evidence of how the design of a building develops. Currently the **Prints and Drawings Department** holdings number some 20,000 works representing architects and theorists of the late fifteenth and early sixteenth centuries through the present—Il Cronaca and Palladio, Peter Eisenman and Arthur Erikson—as well as artists whose work influenced architectural thinking—Louis-Jean Désprez, Kazimir Malevich and the engraver Wenceslas Hollar. Within the collections, architecture is interpreted to include the related disciplines of interior design (Juste-Aurèle Meissonier, for example), stage design (Michele Marieschi), and city planning (Thomas Mawson), Pierre-Dominique Bazaine (the engineer), Pietro Bracci and Melvin Charney (sculptor/architects), Johan von Schwalbach and Albrecht Dürer (writers on and designers of fortifications), are represented also. The collection encompasses travel sketches, designs for visionary structures, and competition drawings (including those which are executed for student competitions held at schools of architecture). Designs for buildings produced at different times and for varied **locations** are brought together, offering historical insight into architectural practice.

To date the **Architectural Archives** of the CCA number more than a quarter of a million items. The architectural archive is composed of all the elements that give evidence of the personality and the practice of an architect—the whole range of drawings, specifications, models, working tools, travel sketches, account books, as well as the architect's library and collected works of art. The CCA Archives hold records of architects and planners who worked across Canada in the first half of the twentieth century as well as those of contemporary architects who have worked internationally.

In the size and quality of its holdings the **Photographs Department** is one of the major collections of photographs anywhere and it is unique in its focus on sub-

ject matter. Photography affected architectural perception and practice by documenting and interpreting built form with an immediacy and accuracy not possible in other media. The department has assembled a collection that provides an historically grounded understanding of the practice and achievement of architectural photography and the historical documentation of buildings, gardens and cityscapes. The collection provides a comprehensive history of the medium as related to architecture, from the announcement of photography in 1839 to the present. The collection includes examples of the work of the major photographers who have explored architecture as a subject as well as the anonymous photographic records of buildings still standing or now demolished. The CCA also commissions photographic projects documenting a wide variety of architectural subjects.

Since its founding the CCA has worked to develop models of access to its collections by creating an **integrated database** through which all types of material in the collection—books and periodicals, prints and drawings, photographs, archives—may be searched singly, in combination, or collectively. This access is extended beyond the CCA through its participation in international information networks, the Research Library Network, the Foundation for Documents of Architecture and the associated Architectural Drawings Advisory Group. By developing scholarly standards for automated cataloging, these networks seek to provide intellectual access to architectural records world wide.

The **conservation laboratory** at the CCA houses advanced equipment for the analysis and treatment of works on paper. Chemical and optical examination also permit insight into how certain artifacts are fabricated.

The **CCA's new building** (Fig. 1) is situated at the western end of downtown Montréal, at the foot of Mount Royal. It stands in one of the two oldest settled sections of the city. The stone fort, built here by the Sulpicians before 1695, antedates the earliest stone fortifications of the city (now le vieux-Montréal) along the river front by a generation. The two southern towers of this fort still stand, two blocks north of the CCA. During the eighteenth and most of the nineteenth centuries the area, with its fields, farms, orchards and villas, was known as "par-

adis terrestre.”

In the last half of the nineteenth century, three of Montréal's four great, religious founding institutions relocated here from the old city. The CCA site, composed of two city blocks laid waste by highway construction three decades ago, is adjacent to these nineteenth century religious houses with their long grey-stone walled gardens. Only the 1874 Shaughnessy House remained on the site. A major task in the design of the new building and its surroundings was to reweave the derelict urban tissue. As any work of architecture must, the building's designs had to compliment, even improve upon, the architectural quality of its neighbourhood. At the same time the design had to reach beyond the neighbourhood to encompass both the best traditions of the city and the timeless values of architecture.

The building, designed by Montréal architect Peter Rose with Phyllis Lambert as consulting architect and Erol Argun as associate architect, is equipped with exhibition galleries, a 217 seat auditorium, bookstore, library, offices for visiting scholars and state-of-the-art conservation and storage facilities. The new building is integrated with Shaughnessy House, now a classified historic monument (1974). The house (Fig. 2), designed by W. T. Thomas, has been restored under the supervision of Denis St.-Louis and contains reception areas and the administration offices of the CCA.

Both the house and the new building are constructed of Saint Lawrence Valley grey limestone, the characteristic building material of Montréal's historic architecture. The new building is on four levels, each 30,000 square feet in area. The design of the complex restores the residential street-scape; its main elevation establishes the fourth side of a new municipal square. This has been landscaped as a public park in consultation with Gerrard and Mackars, landscape architects. Across Boulevard René-Lévesque is the CCA garden designed by Melvin Charney. Extending the underlying intellectual and physical order of the CCA building, the garden is conceived as an architectural allegorical narrative.

With the **official opening** of its new building on May 7, 1989, the CCA will initiate an on-going public program. This will include changing exhibitions, publications, colloquia, lectures, seminars, as well as film and concert series. Within the year after opening, the CCA's Institute of Advanced Study in Architecture will establish a program for scholars-in-residence.

The purpose of the exhibitions and their accompanying publications is to raise intellectual issues in a coherent way, to raise consciousness, and to develop knowledge and understanding based on the immediacy of original documents. Exhibitions will be generated by the CCA or be organized by other institutions. In April 1989 members of the SAH will be invited to preview the two opening exhibitions prepared by the CCA. "Architecture and its Image" examines the complex relationships between drawings, photographs, prints and other two-dimensional works on paper and the buildings, landscapes and cities they represent. The exhibition assembles images from the early sixteenth century to the late twentieth century, from Tokyo and Rome to Mississauga and Montréal. It is curated by Eve Blau, Curator of Exhibitions and Publications at the CCA, and Edward Kaufman, Assistant Professor in the School of Architecture at Columbia University. The exhibition is accompanied by a catalog with essays by six scholars who explore aspects of the exhibition's theme. In addition to the curators' there are contributions by Robin Evans, William Alexander McClung, Helene Lipstadt and Robert Brueggemann.

The exhibition "Centre Canadien d'Architecture/Canadian Center for Architecture: Building and Gardens" examines attitudes toward design and construction. It places the CCA building and public landscape in an historical and actual context. Larry Richards, architect and Associate Professor at the University of Waterloo, is the curator of the exhibition as well as the editor of the publication bearing the same title. Contributing essays to this book are by the principals in design, Melvin Charney and Phyllis Lambert, and there is an interview with Peter Rose by Chantal Pontbriand and George Baird. John Harris' introduction describes the historical evolution of the architectural museum and Larry Richards' essay on "critical classicism" analyses the building and gardens.

Together "Architecture and its Image" and "CCA: Building and Gardens" reveal the potential of a museum of architecture as a statement: about the nature of the works it collects and exhibits; about its role in the life of a culture and a city; and about architecture itself. In April 1989 the exhibition will be in the galleries. The books, co-published by the CCA and MIT, will be in the CCA bookstore. We welcome you to the CCA and to Montréal.

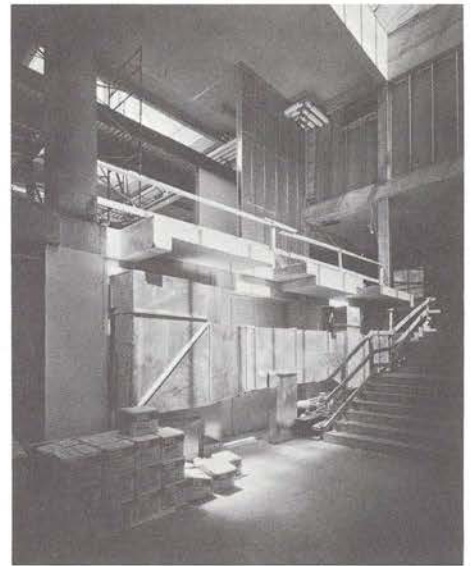


Fig. 1.
Clara Gutsche
United States, 1949-
Canadian Centre for Architecture, Montréal:
Construction View of Entrance Court from
Cloakroom
Gelatin silver print
June 20, 1987
49.9 x 39.7 cm

Collection Centre Canadien d'Architecture
Canadian Centre for Architecture, Montréal

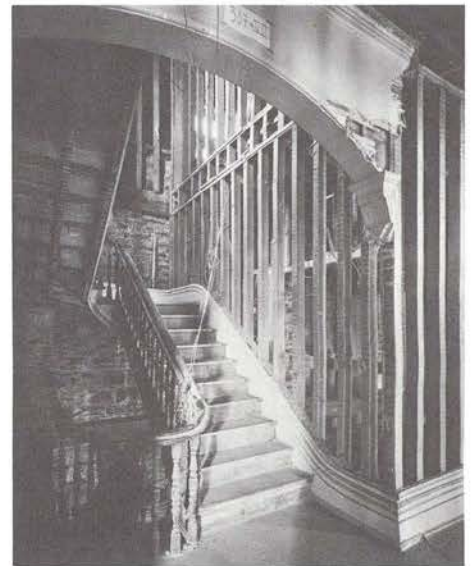


Fig. 2.
Clara Gutsche
United States, 1949-
Canadian Centre for Architecture, Montréal:
Construction View of Staircase, West half of
Shaughnessy House
Gelatin silver print
February 21, 1987
49.9 x 39.7 cm

Collection Centre Canadien d'Architecture
Canadian Centre for Architecture, Montréal

BOOKS AND ARTICLES

- Achleiter, Achim. Alt-St. Peter in Geschichte und Wissenschaft : Abfolge der Bauten, Rekonstruktion Architekturprogramm. Berlin: Gebr. Mann, 1988. 271 p. DM128. ISBN 3-7861-1410-2
- Alofsin, Anthony, ed. Frank Lloyd Wright : an index to the Taliesin correspondence. New York: Garland, 1988. 5 vols. \$1,000.00. ISBN 0-8240-4029-5
- Archer, John. "Ideology and aspiration : individualism, the middle class, and the genesis of the Anglo-American suburb" Journal of Urban History 14:2 Feb. 1988 pp. 214-253
- Beseler, Hartwig and Niels Gutschow. Kriegsschicksale deutscher Architektur : Verluste, Schäden, Wiederaufbau. Neumunster: Karl Wachholtz, 1988. 2 vols. ISBN 3-529-02685-9
- Biancolini, Daniela, ed. Il secolo di Antonelli : Novara 1798-1888. Novara: Istituto Geografico de Agostini, 1988. 351 p. L35000. ISBN 88-402-0011-8
- Bold, John with John Reeves. Wilton House and English Palladianism. London: H.M.S.O., 1988. 168 p. £15.00. ISBN 0-11-300022-7
- Braunfels, Wolfgang. Urban design in Western Europe : regime and architecture, 900-1900. Chicago: Univ. of Chicago Press, 1988. 407 p. Trans. of Abendländische Stadtbaukunst. ISBN 0-226-07178-2
- Brunov, Nikolai Ivanovich. Khram Vasiliiia Blazhennoqa v Moskve : Pokrovskii sobor. Moscow: Iskusstvo, 1988. 255 p. + 123 pl.
- Capella, Juli and Quim Larrea. Designed by architects in the 1980s. New York: Rizzoli, 1988. 191 p. \$30.00. ISBN 0-8478-0941-2
- Centre Canadien d'Architecture/Canadian Centre for Architecture : les debuts/the first five years 1979-1984. Montreal: Centre Canadien d'Architecture, 1988. 135 p. ISBN 0-920785-02-6
- Coggeshall, John M. and Jo Anne Nast. Vernacular architecture in southern Illinois : the ethnic heritage. Carbondale: Southern Illinois University Press, 1988. 203 p. (Shawnee books) \$12.95. ISBN 0-8093-1463-0
- Cohen, Judith S. Cowtown moderne : art deco architecture of Fort Worth Texas. Fort Worth: TCU Press, 1988. 202 p. \$29.95. ISBN 0-87565-065-1
- Cracraft, James. The Petrine revolution in Russian architecture. Chicago: Univ. of Chicago Press, 1988. 372 p. \$45.00. ISBN 0-226-11664-6
- Darius, Veronika. Der Architekt Gottfried Böhm : Bauten der sechziger Jahre. Dusseldorf: Beton-Verlag, 1988. 112 p. DM80. ISBN 3-7640-0236-0
- Davies, Colin. High tech architecture. New York: Rizzoli, 1988. 159 p. ISBN 0-8478-0887-4
- De Long, David Gilson. Bruce Goff : toward absolute architecture. New York: Architectural History Foundation ; Cambridge, MA: MIT Press, 1988. 398 p. (American monograph series) \$50.00. ISBN 0-262-04097-2
- Dee, Elaine Evans and Guy Waiton. Versailles : the view from Sweden. New York: Cooper-Hewit Museum, 1988. 111 p. ISBN 0-910503-56-7
- English extremists : the architecture of Campbell Zogolovitch Wilkinson Gough. London: Fourth Estate, 1988. 112 p. (Blueprint monograph) £12.95
- Ferre, Felipe. Hector Guimard. New York: Abrams, 1988. 223 p. \$49.50. Trans. of Hector Guimard, archte. Rev. and enl. ISBN 0-8109-0973-1
- Follina, Toni. Progetti e architetture/ projects and works 1965-1987. Milan: Electa, 1988. 211 p. L40000. ISBN 88-435-2380-5
- Gaston Castel, architecte marseillais. Marseille: Édisud, 1988. 152 p. F115. ISBN 2-85744-340-4
- Golombek, Lisa and Donald Wilber. The Timurid architecture of Iran and Turan. Princeton, N.J.: Princeton Univ. Press, 1988. 1 vol. (Princeton monographs in art and archaeology; 46) \$130.00. ISBN 0-691-03587-3
- Goode, James M. Best addresses : century of Washington's distinguished apartment houses. Washington, D.C.: Smithsonian Institution Press, 1988. 597 p. ISBN 0-87474-476-8, 0-87474-477-6
- Gozak, Andrei and Andrei Leonidov. Ivan Leonidov : the complete works. New York: Rizzoli, 1988. 216 p. \$60.00. ISBN 0-8478-0951-X
- Gutman, Robert. Architectural practice : a critical view. Princeton: Princeton Architectural Press, 1988. 147 p. \$7.95. ISBN 0-910413-45-2
- Hunter, Julius K. Westmoreland and Portland places : the history and architecture of America's premier private streets, 1888-1988. Columbia: Univ. of Missouri Press, 1988. 219 p. \$39.95. ISBN 0-8262-06770-8
- Hüter, Karl-Heinz. Architektur in Berlin 1930-1933. Stuttgart: Kohlhammer, 1988. 367 p. ISBN 3-17-009732-6
- The J. Paul Getty Museum guide to the villa and its gardens. Malibu, CA: The Museum, 1988. 72 p. \$7.95. ISBN 0-89236-081
- James, Warren A., ed. Ricardo Bofill/Taller de Arquitectura : buildings and projects 1960-1985. New York: Rizzoli, 1988. 239 p. \$45.00, \$29.95. ISBN 0-8478-0739-8, 0-8478-0740-1
- Jencks, Charles. The prince, the architects and new wave monarchy. New York: Rizzoli, 1988. 56 p. \$14.95. ISBN 0-8478-1010-0
- Jennings, Jan and Herbert Gottfried. American vernacular interior architecture, 1870-1940. New York: Van Nostrand Reinhold, 1988. 438 p. \$39.95. ISBN 0-442-22810-4
- Johnson, Philip and Mark Wigley. Deconstructivist architecture. New York: Museum of Modern Art, 1988. 104 p. \$17.95. ISBN 0-87070-298-X
- Karol, Eitan and Finch Allibone. Charles Holden architect 1875-1960. London: Royal Institute of British Architects, Heinz Gallery, 1988. 35 p.
- Kaufman, Edward and Sharon Irish. Medievalism : an annotated bibliography of recent research in the architecture and art of Britain and North America. New York: Garland, 1988. 279 p. (Garland reference library of the humanities ; vol. 791)
- Knöbl, Herbert. Das Neugebaude und sein baulicher

- Zusammenhang mit Schloss Schönbrunn. Vienna: Böhlau, 1988. 142 p. ISBN 3-205-05106-8
- Kreul, Andreas. Die Barockbaumeister Fischer von Erlach : Bibliographie zu Leben und Werk. Wiesbaden: Otto Harrassowitz, 1988. 156 p. DM48.00. ISBN 3-447-02798-3
- Krieger, Alex. The architecture of Kallmann McKinnell & Wood. New York: Rizzoli, 1988. 121 p. \$25.00. ISBN 0-8478-0939-0
- Leach, Peter. James Paine. London: Zwemmer, 1988. 240 p. (Studies in architecture; 25) £65.00. ISBN 0-302-00602-8
- Lowell, Waverly B., ed. Architectural records in the San Francisco Bay area : a guide to research. New York: Garland, 1988. 350 p. (Garland reference library of the humanities; vol. 799) ISBN 0-8240-6614-6
- Lyall, Sutherland. Dream cottages : from cottage ornee to stockbroker Tudor : two hundred years of the cult of the vernacular. London: Robert Hale, 1988. 174 p. £14.95. ISBN 0-7090-3286-2
- Matteucci, Anna Maria. L'architettura del settecento. Turin: Utet, 1988. 355 p. (Storia dell'arte in Italia) L75000. ISBN 88-02-04199-7
- Michelucci, Giovanni. Un viaggio lungo un secolo : disegni di architettura. Florence: Alinea, 1988. 302 p. L50000
- Müller, Rainer. Das Robert-Bosch-Haus. Stuttgart: Deutsche Verlags-Anstalt, 1988. 95 p. DM48. ISBN 3-421-02939-3
- Nikula, Riita. Armas Lindgren 1874-1929 arkkitehti = architect. Helsinki: Museum of Finnish Architecture, 1988. 199 p. (Suomen rakennustaiteen museon monografiasarja) ISBN 951-9229-55-8
- Norberg-Schulz, Christian. New world architecture. New York: Princeton Architectural Press, 1988. 64 p. \$17.50. ISBN 0-910413-43-6
- Norwegian architecture 1975-85 = Norsk arkitektur 1975-85. Oslo: The Norwegian Museum of Architecture, 1988. 53 p.
- Nuttgens, Patrick. Understanding modern architecture. London: Hyman, 1988. 220 p. L14.95. ISBN 0-04-500040-9
- Overy, Paul, et al. The Rietveld Schroder house. Cambridge, MA: MIT Press, 1988. 128 p. \$25.00. ISBN 0-262-15033-6
- Património arquitectónico Macau = Macau cultural heritage. Macau: Instituto Cultural, 1988. 284 p.
- Pisani, Mario. Massimiliano Fuksas architetto. Rome: Gangemi, 1988. 140 p. L36000
- Polshek, James Stewart. Context and responsibility : buildings and projects 1957-1987. New York: Rizzoli, 1988. 258 p. \$45.00, \$29.95. ISBN 0-8478-0876-9, 0-8478-0877-7
- Pommer, Richard, et al. In the shadow of Mies : Ludwig Hilberseimer, architect, educator, and urban planner. Chicago: Publ. by the Art Institute of Chicago in assoc. with Rizzoli, 1988. 144 p. \$19.95. ISBN 0-8478-0931-5
- Raëv, Svetlozar. Gottfried Böhm : lectures buildings projects = Gottfried Böhm : Vorträge Bauten Projekte. Stuttgart: Karl Krämer, 1988. 312 p. \$75.00. ISBN 3-7828-1604-8
- Ranalli, George. Buildings and projects. Princeton: Princeton Architectural Press, 1988. 107 p. \$19.95. ISBN 0-910413-42-8
- Robinson, John Martin. The English country estate. London: The National Trust, 1988. 216 p. £16.95. ISBN 0-7126-2275-6
- Sachsse, Rolf. Architekturfotografie des 19. Jahrhunderts an Beispielen aus der fotografischen Sammlung des Museums Folkwang. Berlin: Nishen, 1988. 31 p. (Stationen der Fotografie; 6) ISBN 3-88940-306-9
- Saggio, Antonio. Un architetto americano Louis Sauer. Rome: Officina, 1988. 204 p. L20000
- San Cristóbal Sebastián, Antonio. Arquitectura virreynal religiosa de Lima. Lima, Peru: Libreria Studium, 1988. 400 p.
- Scully, Vincent. American architecture and urbanism. New rev. ed. New York: Holt, 1988. 320 p. ISBN 0-8050-0105-0, 0-8050-0813-6
- Severens, Kenneth. Charleston antebellum architecture and civic destiny. Knoxville: Univ. of Tennessee Press, 1988. 315 p. ISBN 0-87049-555-0
- Smith, Thomas Gordon. Classical architecture : rule and invention. Salt Lake City: Gibbs M. Smith, 1988. 159 p. \$34.95. ISBN 0-87905-246-5
- Stern, Robert A.M. with Raymond W. Gastil. Modern classicism. New York: Rizzoli, 1988. 296 p. \$45.00. ISBN 0-8478-0848-3
- Stillman, Damie. English neo-classical architecture. London: Zwemmer, 1988. 2 vols. (Studies in architecture; XXVI) £150.00. ISBN 0-302-00601-X
- Sykes, Christopher Simon. Ancient English houses, 1240-1612. London: Chatto & Windus, 1988. 239 p. £19.95. ISBN 0-7011-3176-4
- Symondson, Anthony. The life and work of Sir Ninian Comper 1864-1960. London: Royal Institute of British Architects, Heinz Gallery, 1988. 36 p.
- Topkapi Saray Museum : architecture : the harem and other buildings. Boston: New York Graphic Society, 1988. 216 p. \$150.00. ISBN 0-8212-1680-5
- Traité d'architecture de la Renaissance : actes du colloque tenu à Tours du 1er au 11 juillet 1981. Paris: Picard, 1988. 507 p. (De architectura) F400. ISBN 2-7084-0339-7
- Vitta, Maurizio. Una cattedrale per il futuro : Santa Maria del Redentore : la chiesa di Pierluigi Spadolini a Roma. Milan: Arcaedizioni, 1988. 126 p. L80000. ISBN 88-7838-000-8
- Volk, Waltraud. Potsdam : historische Strassen und Plätze heute. Berlin: VEB Verlag für Bauwesen, 1988. 224 p. DM49.30. ISBN 3-345-00050-4
- Woodstock, David G., et al., eds. Adaptive reuse : issues and case studies in building preservation. New York: Van Nostrand Reinhold, 1988. 139 p. \$34.95. ISBN 0-442-20815-4

QUERIES

Continued from page 2)

Architecture, M/C030, University of Illinois-Chicago, Chicago, IL 60680.

The **Historic American Buildings Survey and Historic American Engineering Record** are seeking information for a comprehensive bibliography of publications by and about the two surveys, from the establishment of HABS in 1933 until the end of 1988.

According to Robert J. Kapsch, Chief, HABS/HAER, the bibliography is intended as a finding aid for architectural historians, architects, historians and other researchers. James C. Massey, a former HABS chief, will direct its compilation. Individuals and organizations that have cooperated in funding and running HABS/HAER field projects, librarians, and past HABS/HAER officials are asked to share their knowledge of older or local publications for listing in the illustrated bibliography. State and local publications from the 1930s are of particular interest.

In addition to every edition of the national, regional, state and local catalogs, the bibliography will include measured drawing folios, leaflets and circulars, documentary publications relating to the history, organization and operation of HABS, exhibit catalogs, internal documents such as instructions and specifications for field workers and record compilers, and books and booklets based on HABS/HAER records. It will also include an index and a short-title selection of books and articles not generated by HABS/HAER that use significant numbers of HABS or HAER photographs and drawings.

Co-compilers, with Massey, are Nancy B. Schwartz and Shirley Maxwell. They may be contacted through Massey Maxwell Associates, P.O. Box 263, Strasburg, VA 22657, (703) 465-4566.

COURSES

The Victorian Society in America and The Victorian Society in Great Britain announce the 1989 **Summer Program of Nineteenth-Century Studies**. These summer programs initiated fifteen years ago under the aegis of Sir Nicholas Pevsner and His Royal Highness, the Duke of Gloucester, are a unique and highly successful endeavor sponsored by the Victorian Societies in America and Great Britain. The courses, taught by experts in their fields, include lectures, tours and weekend trips to significant sites in America and England.

LONDON SCHOOL—July 8-29, 1989.

Directed by Gavin Stamp, M.A., Ph.D., Architectural Historian and author. Based at College Hall of the University of London in Bloomsbury. The fee of \$1,750.00 includes accommodations, breakfasts, and entrance fees.

AMERICAN SCHOOL—June 2-11, 1989. Directed by Richard Guy Wilson, author and Professor of Architectural History at the University of Virginia. Based at Salve Regina College in Newport, R.I. The fee of \$795.00 includes accommodations, receptions, entrance fees and bus transportation while on tour.

Application deadline, March 10, 1989. Enrollment is limited. For applications and information contact: Maria Nocito, Summer School Coordinator, Victorian Society in America, 219 South 6th Street, Philadelphia, Pa. 19106. Tel.: (215) 627-4252.

Old Sturbridge Village will hold its first annual **Summer Field School in Architectural History** from June 26 to August 11, 1989. The program, focusing on buildings of the late eighteenth and early nineteenth century in rural Central Massachusetts, will feature intensive instruction and experience in architectural documentation techniques: measuring and drawing buildings; architectural photography; and a thorough introduction to documentary research. Guest lecturers from numerous disciplines will make presentations on current methods in the study of architecture and New England history. The Field School in Architectural History will be held in conjunction with the eleventh annual Old Sturbridge Village Summer Field School in Historical Archeology. The second season of archaeological excavation at the house and shop site of the early nineteenth century cabinetmaker/housewright James Clark of West Brookfield, Massachusetts, will be complemented by the documentation of buildings in West Brookfield and the surrounding towns, several of which were erected by Clark. Students in both field schools will be given many opportunities to interact with their counterparts and will be encouraged to explore and integrate the methods and findings of the other group. Negotiations are currently underway with Clark University of Worcester, Massachusetts to grant both undergraduate and graduate course credits to field school participants. Applications to the Old Sturbridge Village Field School in Architectural History must be returned by May 1, 1989. Enrollment is limited to twenty students. For further information and an

application contact: Myron O. Stachiw or Nora Pat Small, Research Department, Old Sturbridge Village, 1 Old Sturbridge Village Rd., Sturbridge, MA 01566, (508) 347-3362.

CONFERENCES

The **Division of Architectural History at The University of Virginia** announces the establishment of an annual symposium devoted to the history of architecture and art. The topic for the first symposium will be **The Villa and Pastoralism in America, 1730-1830**, to be held on March 17 and 18, 1989. For further information contact, Division of Architectural History, School of Architecture, University of Virginia, Charlottesville, VA 22903. (804) 924-3976.

A Christopher Wren Symposium will be held at the Churchill Memorial and Library April 28, 29 and 30, 1989, in Fulton, Mo. The focus of the symposium, says the chairman, Professor Christian Hauer, of Westminster College, will be Wren's multifaceted contributions to the Anglo-American cultural heritage. Wren's church of St. Mary the Virgin, Aldermanbury, was dismantled in London and reconstructed at Westminster College as the core of a memorial to Churchill, who gave his famous "Iron Curtain" speech at the college in 1946. The symposium will coincide with the 20th anniversary of the 1969 dedication of the Memorial. Symposium topics will include: Wren's philosophy as evidenced in his buildings; Wren the architect; Wren the mathematician and scientist; and the Wren Church of St. Mary, Aldermanbury. Complementing the symposium will be an exhibit, "Christopher Wren's London" in the special exhibits gallery of the Memorial. The exhibit will become part of the museum's permanent collection and will be available to other institutions. The symposium committee is also planning a concert of music from the age of Wren that will make use of the Mander tracker organ in the church.

For further information: Winston Churchill Memorial and Library in the United States, Westminster College, Fulton, Missouri 65251, phone: (314) 642-6648/(314) 642-3361.

Sacred Trusts II: MONEY, MATERIALS & MANAGEMENT, a conference sponsored by the Detroit Historic Designation Advisory Board, the National Trust for Historic Preservation, and the National Center for the Stewardship and Preservation of

Religious Properties, will be held in Detroit, May 17-21, 1989. Preservationists, clergy, laypeople and craftspeople will gather to address the challenges facing historic religious buildings and their solutions. Includes workshops, issues forums, tours, trade show, photo exhibit. For information and brochure, contact the Historic Designation Advisory Board, 202 City County Building, Detroit, MI 48226 or (313) 224-3487.

The next annual symposium in **Landscape Architecture at Dumbarton Oaks** will be held on 19-21 May 1989. This three-day event will be in the nature of a state of the art enquiry: what has garden history achieved? Where should it go from here? Speakers from all over the world will consider different cultural gardens and their history, different approaches to garden history, and different eras of garden creation from ancient Roman, to colonial American and nineteenth-century England. Preliminary enquiries and pre-registration forms from Studies in Landscape Architecture, Dumbarton Oaks, 1703 32nd Street, N.W., Washington, D.C. 20007.

PLACEMENT NOTICES

• Tallahassee, Florida 32307. Florida A & M University, School of Architecture. **TENURE TRACE FACULTY POSITIONS.** Available Fall 1989. Projected areas of need are basic and advanced architectural design, history and theory, environmental technology, structures, materials and methods of construction, and graphics. Minimum requirements are a master's degree in the area of primary expertise and evidence of university teaching experience and other professional qualifications. Rank and salary will be dependent upon experience and qualifications. EO/AE, eager to recruit qualified women and minority candidates. Apply

(with vitae, letter of application, and names and addresses of three references) to: Michael Alfano, Jr., Chairman, Search Committee, School of Architecture, Florida A & M University, Tallahassee, FL 32307.

• St. Louis, Missouri 63130. Washington University in St. Louis, School of Architecture. **FACULTY POSITION/ARCHITECTURAL HISTORY.** Available Fall 1989 at Assistant Professor level, appointment to position is tenure track. Appointment requires teaching courses and seminars in architectural history, theory, and criticism. Active interested in architectural studio reviews is very important. Some administrative duties are also required. Preference given to candidates holding or currently completing Ph.D. degree, with strength in the development of theoretical attitudes and the promise of continuing scholarship. Committee will begin to evaluate candidates on February 15, 1989. EO/AE. Verification of employment eligibility required. Apply (with letter of application, curriculum vitae, recommendation letters and statement of intention) to: Chairperson, Faculty Search Committee, School of Architecture, Washington University, St. Louis, MO 63130.

• New York, New York 10031. City College/City University of New York, School of Architectural and Environmental Studies. **FULL TIME TENURE TRACK FACULTY POSITION,** in Architectural History. Starting August 1989. Rank and salary commensurate with experience. Qualifications should include Ph.D. in Art or Architecture w/specialization in Architectural History, and teaching experience. Responsibilities include teaching core courses in architectural history and other speciality courses. Additional areas of professional and scholarly activity are encouraged. Application deadline March 1, 1989. EO/AA. Apply (with letter of application, curriculum vitae, names and addresses of three references) to: Garrison McNeil, Chairman, School of Architectural & Environmental Studies, City College of CUNY,

Convent Avenue at 138th Street, New York, NY 10031.

• Charlotte, North Carolina 28223. The University of North Carolina at Charlotte, College of Architecture. **FACULTY POSITION/ASST. or ASSOC. PROFESSOR** to teach Contemporary Architectural History and Theory. Expected to teach a lecture or seminar course and conduct a studio at both the undergraduate and soon to be initiated graduate research (architectural design-technology-theory) programs. Candidate is expected to have a professional degree in architecture, and graduate study in architectural history-theory as well as demonstrated interest in teaching, research or theory based practice. Should be committed to working with other faculty to provide a holistic, innovative architectural education while developing the history/theory program. Position available August 1989. Application deadline February 15, 1989. AA/EOE. Apply (with vitae and statement of your thoughts and approach to teaching and History-Theory-Design) to: Charles C. Hight, Dean, College of Architecture, UNCC, Charlotte, NC 28223.

• Montreal, Canada H3A 2T6. McGill University, Faculty of Arts, Department of Art History. **FACULTY POSITION,** tenured appointment in the History of Architecture at level of full Professor, commencing in September 1989. First preference is for candidates specializing in Medieval or Renaissance architecture. Strong scholarly record and administrative experience are required. Responsibilities include teaching courses and seminars at the undergraduate and graduate levels, and supervision of graduate theses. Remuneration commensurate with qualifications and experience. Application deadline February 28, 1989 or until position has been filled. Apply (with application, complete curriculum vitae, and three letters of reference) to: Dr. Thomas L. Glen, Chairman, Department of Art History, McGill University, 853 Sherbrooke Street West, Montreal, Quebec, H3A 2T6 Canada.

Society of Architectural Historians

1232 Pine Street
Philadelphia, PA 19107-5944

Non-Profit Org.
U. S. Postage
PAID
Kansas City, Mo.
Permit No. 4085

FEBRUARY 1989

VOL. XXXIII NO. 1

The *Newsletter* is published every even month by the Society of Architectural Historians (215/735-0224). Deadline for submission of material: the 15th of the preceding even month.

President: Richard Betts

School of Architecture
University of Illinois
608 East Lorado Taft Drive
Champaign, IL 61820

Editor: Mary Lee Thompson

Department of Art History
Manhattanville College, Purchase, NY 10577

Mailing address

784 Columbus Ave. Apt. 5M
New York, NY 10025

Assistant Editor: Charles Savage

Landmarks Preservation Commission
225 Broadway St., NY, NY 10007

Publications Editor: Judith Holliday

Fine Arts Library, Sibley Dome, Cornell University
Ithaca, NY 14853