

SOCIETY OF
ARCHITECTURAL
HISTORIANS

2016 ANNUAL REPORT

OCTOBER 1, 2015–SEPTEMBER 30, 2016





LETTER FROM THE EXECUTIVE DIRECTOR

When I think about the accomplishments of Fiscal Year 2016, the first thing that comes to my mind is gratitude. While we work very hard to earn revenue and raise funds to keep SAH, Buildings of the United States, and Charnley-Persky House on a firm financial footing, that is just one part of the equation that helps our multi-faceted organization succeed annually. The other part of the equation is made up of the hundreds of members and individuals who share their time, knowledge, and expertise with this organization every year.

The SAH Executive Committee, made up of officers, editors, and key SAH staff, invest hundreds of hours organizing conferences and tours, editing publications and online academic resources, participating in nearly 10 meetings and dozens of conference calls every year, and planning a sustainable future for SAH. The SAH Board provides guidance on the future of SAH, offers personal and fundraising connections, and supports the organization when it's time to reaffirm our core values and defend academic freedom. Beyond the leadership of SAH are hundreds of highly knowledgeable members who spend hours participating in SAH committee conference calls; attending editorial advisory committee meetings; reviewing



View from the terrace of the Süleymaniye Mosque Complex, Istanbul, towards the Bosphorus and Golden Horn (Patricia Blessing)

fellowship and field trip applications; deciding on SAH's publication and film awards; and peer reviewing books, articles, essays, and building entries. The SAH Annual International Conference has its own universe of volunteers including conference and local chairs, session chairs, speakers, roundtable and seminar organizers, plenary and introductory speakers, tour leaders, session room monitors, and experts on the ground who want to share the wonders of their region with our conference attendees. Charnley-Persky House also has its own cadre of volunteers, including trained docents, donors, program partners, and Board members who now will help us implement a new Conservation Management Plan for the landmark house. The volunteers who run SAH's 19 thematic and geographic chapters organize more than 100 programs, tours, and conferences annually, raising awareness of local architectural history and serving on the front lines to prevent the loss of buildings and landscapes important to their region. Meanwhile, our network of 26 Partner Organizations helps SAH spread the word about our ongoing mission to like-minded individuals worldwide.

Equally important, SAH's generous individual, government, and foundation donors help SAH solidify its existing programs and publications and initiate new ones. In FY2016 we were par-

ticularly grateful to five major funders whose support was crucial: The National Endowment for the Humanities, which made a third grant to SAH to further develop *SAH Archipedia*; The Richard H. Driehaus Foundation, which made a three-year grant to SAH for general operating support; the Alphawood Foundation Chicago, which funded a Conservation Management Plan for the continued restoration of Charnley-Persky House; the Getty Foundation, which provided support for a record number of international fellows to participate in SAH's annual conference in Pasadena; and the Gill Family Foundation, which made a five-year grant to support and expand SAH's resources to graduate students.

On behalf of the SAH Board and staff, I extend my warm thanks to each member, volunteer, and donor whose generosity contributed to support the activities that define the Society of Architectural Historians. Our gratitude is as deep as our seventy-seven-year commitment to continue promoting the study, interpretation, and conservation of the built environment worldwide.

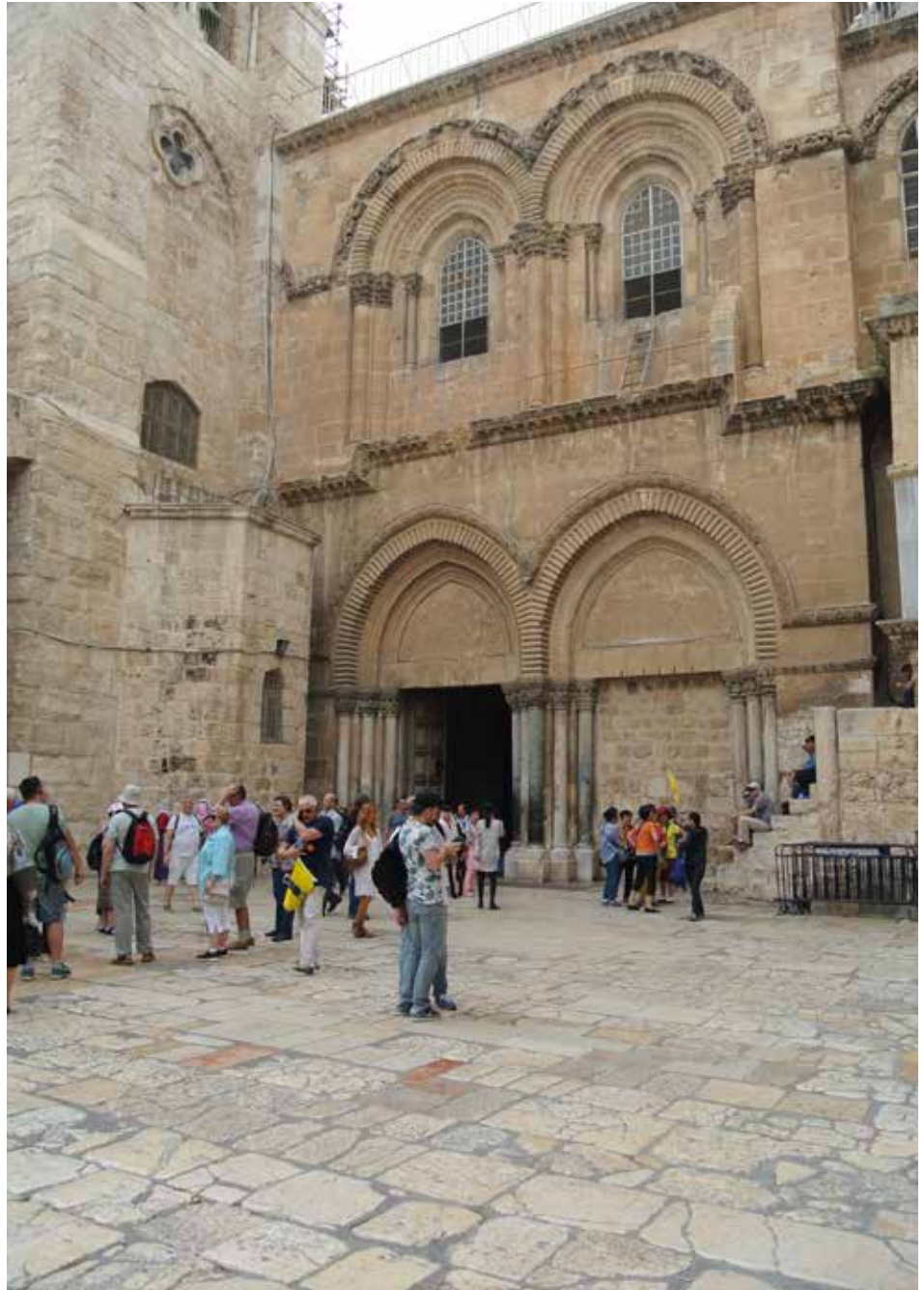
Pauline Saliga
SAH Executive Director



LETTER FROM THE PRESIDENT

The Society of Architectural Historians continues to thrive in its mission to advance the study, interpretation, and conservation of architecture, design, landscapes, and urbanism in both local and global contexts. While SAH is based in Chicago in the Louis H. Sullivan and Frank Lloyd Wright-designed Charnley-Persky House, its members and topics of inquiry span the globe. The scope of the organization's activities are represented at SAH Annual International Conferences. The 2016 meeting was located in Pasadena/Los Angeles, California, at the hub of the Pacific Rim and energized by fellows from traditionally under-represented countries whose travel was funded by the Getty Foundation. SAH's publications that include the *Journal of Society of Architectural Historians*, *Buildings of the United States*, and *SAH Archipedia*, continue to lead the field in both print and digital formats to both preserve history and capture the potential of the internet. SAH fellowships enable members to partake in all of this and ensure the future of the built environment's serious study and appreciation.

Ken Tadashi Oshima
SAH President

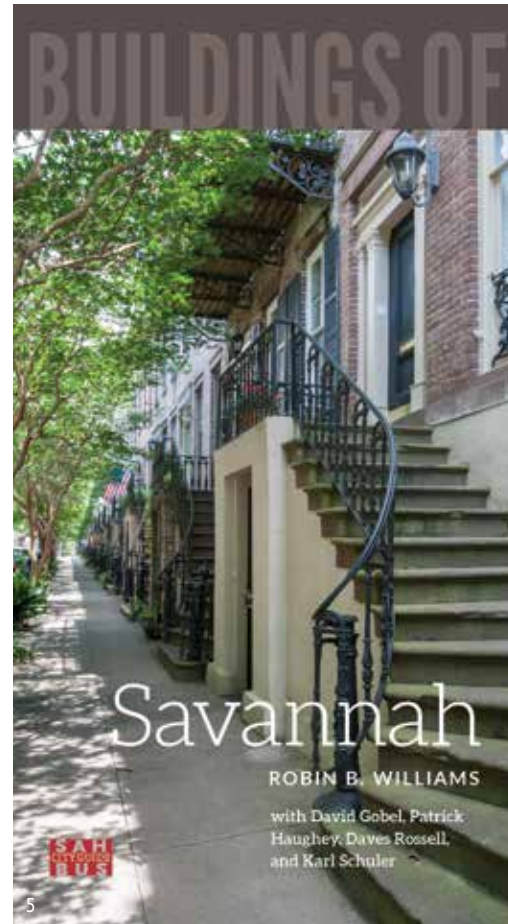
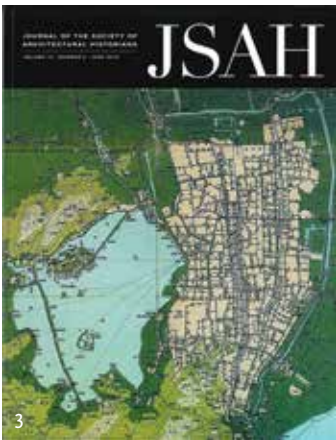


South façade, Church of the Holy Sepulcher, Jerusalem (Patricia Blessing)

The Society of Architectural Historians is a nonprofit membership organization that promotes the study, interpretation, and conservation of architecture, design, landscapes, and urbanism worldwide. Founded in 1940, SAH serves a network of local, national, and international institutions and individuals who, by profession or interest, focus on the history of the built environment and its role in shaping contemporary life. SAH promotes meaningful public engagement with the history of the built environment through advocacy efforts, print and online publications, and local, national, and international programs. Learn more at sah.org.

PUBLICATIONS





Journal of the Society of Architectural Historians

Editor **Patricia Morton**, University of California, Riverside, developed four issues of *Journal of the Society of Architectural Historians* this year including a special issue on global postwar architecture. *JSAH* is published by University of California Press.

Buildings of the United States

Buildings of Savannah by Robin D. Williams with David Gobel, Patrick Haughey, Daves Rossell, and Karl Schuler was released in May 2016 under the direction of Editor-in-Chief **Karen King-ley**, Professor Emerita, Tulane University, and **Mark Mones**,

Senior Editor, Buildings of the United States/*SAH Archipedia*, University of Virginia Press.

The "Reading the City" public programs series, designed to support and publicize the *Buildings of Savannah* book, ran from April–May 2016. The program was presented by SAH and **Savannah College of Art and Design** with support from the **National Endowment for the Arts** and the **Georgia Humanities Council** and included six lectures, a panel discussion, and 12 public walking tours.



GEORGIA
HUMANITIES
COUNCIL

1. *JSAH*, Vol. 74, No. 4 December 2015, Special Issue on Global Postwar Architecture
2. *JSAH*, Vol. 75, No. 1 March 2016
3. *JSAH*, Vol. 75, No. 2 June 2016
4. *JSAH*, Vol. 75, No. 3 September 2016
5. *Buildings of Savannah*, Robin B. Williams with David Gobel, Patrick Haughey, Daves Russell, and Karl Schuler, University of Virginia Press, 2016.



T.A. Moulton Barn (Grovant), early 20th century, WY. (Richard Collier, Wyoming Department of State Parks and Cultural Resources)

National Endowment for the Humanities Grant

The Society of Architectural Historians was awarded a third major grant from the **National Endowment for the Humanities** to commission new content and site enhancements to *SAH Archipedia*, a media-rich online encyclopedia of American architecture developed by SAH in collaboration with the **University of Virginia Press**. The \$205,000 outright and matching grant will help support improvements to *SAH Archipedia* in its two formats: *SAH Archipedia Classic Buildings*, an open access online educational resource that will contain 100 of the most representative buildings, landscapes and cityscapes in all 50 states, as well as *SAH Archipedia*, a larger online library subscription resource containing additional essays and building entries. The full edition of *SAH Archipedia* is open to subscribing institutions and individual SAH members.

Funded by two previous NEH grants and launched in 2012, *SAH Archipedia* now contains thousands of illustrated and mapped histories of America's most significant and representative buildings, landscapes and cityscapes. SAH will use the third NEH grant to commission historians to create new scholarly, born-digital research on the built environment in the U.S. and to update and reinterpret existing *SAH Archipedia* content. Other planned site enhancements include developing humanities-focused K-12 teaching materials and public lectures, providing mobile access to high-quality humanities content, and providing open access to documentary and interpretive content on the history of the built environment in the U.S.





New Additions to SAH Archipedia

Arkansas

50 entries from the forthcoming *Buildings of Arkansas* (2017) volume by Cyrus A. Sutherland with Gregory Herman, Claudia Shannon, Jean Sizemore, and Jeannie M. Whyne

Idaho

50 entries and 13 subentries compiled by state coordinators Anne L. Marshall, Wendy R. McClure, Phillip G. Mead, and D. Nels Reese

Kentucky

54 entries added by state coordinator Cristina Carbone

Maryland

50 entries and 18 subentries added by Lisa P. Davidson and Catherine C. Lavoie

New Hampshire

25 entries added from *Buildings of New Hampshire* by Bryant F. Tolles Jr. and James L. Garvin

New Mexico

51 entries and 46 subentries compiled by Christopher Mead and assistant coordinator Regina Emmer

Ohio

50 entries and ten additional linked entries compiled by state coordinator Barbara Powers

Utah

50 entries compiled by state coordinator Shundana Yusaf

Wyoming

50 entries and 13 subentries compiled by Mary M. Humstone

1. Cincinnati Museum Center (Cincinnati Union Terminal), 1927–1933, Fellheimer and Wagner ; Paul Philippe Cret and Roland Wank, design consultants; 1986–1990 rehabilitation and conversion to museum, E. Verner Johnson and Glaser Associates. (Richard W. Burry - Volunteer Photography Group)
2. Coeur d'Alene's Old Sacred Heart Mission, 1850–1853, Antonio Ravalli; 1973–1975 restoration, Geoffrey Fairfax and Gerron Hite, Cataldo, ID. (Gregory White)
3. AT&SF Depot, 1898–1902, Atchison, Topeka and Santa Fe Railroad, Las Vegas, NM. (Regina N. Emmer)
4. Rosie Joe House, 2004, DesignBuildBLUFF, Bluff, UT. (Courtesy of the School of Architecture, University of Utah)



CONFERENCE + PROGRAMS



Society of Architectural Historians 69th Annual International Conference

April 6–10, 2016 | Pasadena/Los Angeles, California

SAH's 69th Annual International Conference at the Pasadena Convention Center, chaired by SAH 1st Vice President **Ken Tadashi Oshima**, University of Washington, drew 738 registrants. Special programs included an introductory address, "Learning from Los Angeles: Identity, Mobility, Climate and Design," by **Eric Avila**, professor of history, Chicano studies and urban planning at University of California, Los Angeles (UCLA); a plenary talk, "Potentials of the Profession," by **Dana Cuff**, architecture theorist, professor and founding director of cityLAB at UCLA; and the SAH Los Angeles Seminar, "Surveying L.A.: Past, Present, Future," held at SCI-Arc, which looked critically at the SurveyLA project, a \$5 million city-wide survey of historic resources in the L.A. area sponsored by the J. Paul Getty Trust and the City of Los Angeles. SAH held its closing night event at the incomparable Gamble House, designed by Greene and Greene and operated by the University of Southern California School of Architecture. Incoming SAH 2nd Vice President **Victoria Young** emceed the awards ceremony as the respective selection committees announced the recipients of six publication awards and the SAH Award for Film and Video. SAH inducted four new Fellows of the Society for their service to SAH and contributions to the field of architectural history. **Linda Hart** and **Kevin McMahon** served as Local Co-Chairs for the Pasadena/Los Angeles conference.

1. SAH Los Angeles Seminar at SCI-Arc. 2. Members in the exhibit area. 3. SAH-Getty Fellow Comfort Badaru talks with Seminar attendee. 4. SAH members at the Gamble House. 5. Members chat between sessions.

738 ATTENDEES

36 COUNTRIES
REPRESENTED

42 STATES
REPRESENTED

42 SESSIONS

212 PAPERS
PRESENTED

14 TOURS

AWARD PROGRAMS

SAH Publication Awards

The Society presented the following five awards honoring the most distinguished publications in architectural history, urban history, landscape history, preservation, and architectural exhibition catalogues in 2016. SAH also presents the Founders' Award for an outstanding *JSAH* article written by an emerging scholar in the previous two years.

Antoinette Forrester Downing Book Award

Miles Glendinning

The Conservation Movement: A History of Architectural Preservation
Routledge, 2013

Elisabeth Blair MacDougall Book Award

Vittoria Di Palma,

Wasteland: A History

Yale University Press, 2014

Honorable Mention:

Finola O'Kane

Ireland and the Picturesque: Design, Landscape Painting and Tourism 1700–1840
Yale University Press, 2013

Philip Johnson Exhibition Catalogue Award

Katherine A. Bussard, Alison Fisher, and Greg Foster-Rice

The City Lost & Found: Capturing New York, Chicago, and Los Angeles, 1960–1980
Princeton University Art Museum, 2014

Spiro Kostof Book Award

Kenny Cupers

The Social Project: Housing Postwar France
University of Minnesota Press, 2014

Honorable Mention:

Christine Stevenson

The City and the King: Architecture and Politics in Restoration London
Yale University Press, 2013

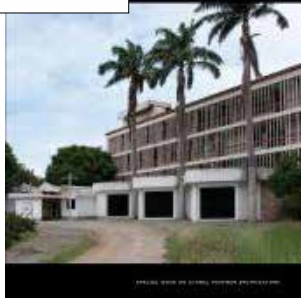
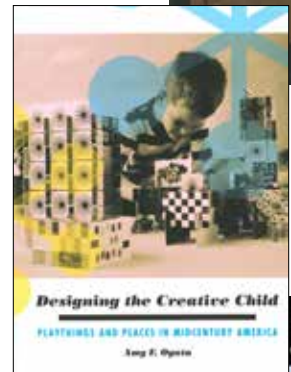
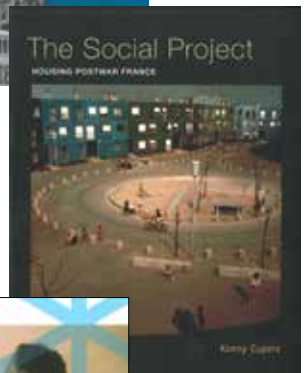
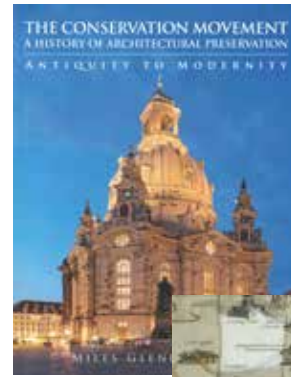
Alice Davis Hitchcock Book Award

Amy F. Ogata,

Designing the Creative Child: Playthings and Places in Midcentury America
University of Minnesota Press, 2013

Founders' JSAH Article Award

Lukasz Stanek, "Architects from Socialist Countries in Ghana (1957–67): Modern Architecture and Mondialisation," *Journal of Architectural Historians* 74, no. 4 (December 2015): 416–442.





SAH Award for Film and Video

The SAH Award for Film and Video recognizes annually the most distinguished international work of film or video on the history of the built environment. The 2016 SAH Award for Film and Video was presented to **Oeke Hoogendijk** for his film, *The New Rijksmuseum* (First Run Features, 2014), a documentary on the complicated renovation of Pierre Cuypers' 1885 museum in Amsterdam. An Honorable Mention was presented to **Dieter Reifarth** for his film, *Haus Tugendhat* (Pandora Film, 2013), which chronicles the history of the luxurious villa completed by Mies van der Rohe in 1929–1930 in the city of Brno in the Czech Republic.

SAH Fellows

The Society was proud to induct four new SAH Fellows in 2016 for their significant contributions to the field in-

cluding scholarship, service to SAH and stewardship of the built environment: **Barry Bergdoll, FSAH**, Meyer Schapiro Professor of Modern Architectural History, Columbia University; **Diane Favro, FSAH**, Professor and Associate Dean of Academic Affairs, UCLA School of the Arts and Architecture; **Richard W. Longstreth, FSAH**, Professor of American Civilization, Director of the Graduate Program in Historic Preservation, The George Washington University; and **Therese O'Malley, FSAH**, Associate Dean, Center for Advanced Studies in the Visual Arts, National Gallery of Art.

SAH Awards for Architectural Excellence

SAH presented the 2015 Awards for Architectural Excellence at its 6th annual Awards Gala on November 6, 2015, in Chicago. **Paul Goldberger**, Contributing Editor, *Vanity Fair*, and Joseph Urban Chair in Design and Architecture,

The New School, received the Award for Architectural Journalism; **T. Gunn Harboe, FAIA**, President, Harboe Architects, PC, received the Award for Heritage Conservation; and **Richard W. Longstreth**, Director of Historic Preservation and Professor of American Civilization, The George Washington University, received the Award for Architectural Scholarship and Preservation Advocacy. See page 21 for more on the Gala.

1. *The New Rijksmuseum* poster
2. Still from *The New Rijksmuseum*
3. *Haus Tugendhat* poster
4. Still from *Haus Tugendhat*
5. Barry Bergdoll, FSAH
6. Diane Favro, FSAH
7. Richard W. Longstreth, FSAH
8. Therese O'Malley, FSAH



SAH American Architecture and Landscape Field Trip Program

In 2014, an esteemed member of SAH contributed \$50,000 for the Society to establish a program to take underserved youth on field trips allowing them to learn more and be inspired by awesome architecture. These are two programs that the anonymous gift supported.

artworxLA

SAH awarded artworxLA a \$5,000 grant to support the design and implementation of a 10-week program on architectural history for underserved Los Angeles high school students engaged in the organization’s series of artist-led classroom workshops. The funding helped artworxLA provide a special architectural history class and tours of downtown L.A. from March through May 2016 for teens who are at the highest risk of exiting high school without

a diploma. The experience gave students the opportunity to explore their city beyond their local neighborhoods and deepened their understanding of and connection to the architecture in Los Angeles. Students expressed their desire for community building through artwork, which they presented at the Hammer Museum at the conclusion of the program.

I-NOMA

In July 2016 SAH awarded the **Illinois Chapter of the National Organization of Minority Architects (I-NOMA)** a \$5,000 grant to support their **Project Pipeline Architecture Summer Camp** for Chicagoland students in the 6th–8th grades. The mission of the annual camp is “to empower young people to affect change in their community through design.” A team of eight architects led by I-NOMA Vice President **Oswaldo Ortega** managed dozens of architect volunteers who worked with the students on

mathematical, historical, and planning concepts. More than 40 students met for the four-day camp in the historic Ida Noyes Hall at the University of Chicago to learn about personal space, neighborhood space, and the vertical city. In addition to learning how to measure, sketch, and plan buildings and neighborhoods, the students toured Collegiate Gothic, Prairie School, and Modern and Contemporary buildings on the campus. In-depth field trips organized for them included Robie House (1908–10), Frank Lloyd Wright’s first full realization of the Prairie School House, and Helmut Jahn’s Joe and Rika Mansueti Library (2011).

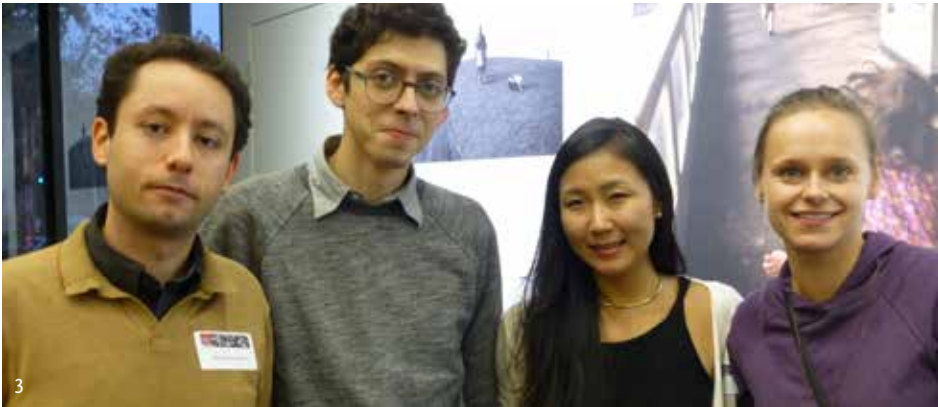
1. Rosalind Sagara, Ken Breisch, and artworxLA students
2. artworxLA students tour historic downtown Los Angeles
3. I-NOMA Project Pipeline team leader talks with students
4. I-NOMA students sketch Frank Lloyd Wright’s Robie House



1



2



3



4

SAH 75th Anniversary Reception at Harvard

SAH held a celebratory reception at the Frances Loeb Library at the Harvard Graduate School of Design on October 28, 2015 to celebrate the 75th anniversary of SAH's founding at the **Harvard Faculty Club** on July 31, 1940. Through the generosity of **Ann Whiteside**, Librarian/Assistant Dean for Information Services at the Loeb Library, and several donors, more than 50 SAH and **SAH New England Chapter** members joined SAH President **Ken Breisch** and SAH Executive Director **Pauline Saliga** for reminiscences about the Society's history.

Building Art: Paul Goldberger on Frank Gehry

Collaborating with the **Chicago Humanities Festival**, SAH presented a talk with Paul Goldberger, the *New Yorker's* architecture critic and author of *Why*

Architecture Matters, on November 7, 2015. The talk centered around Goldberger's biography of architect Frank Gehry, *Building Art*. Goldberger spoke with architecture writer **Lee Bey** (WBEZ, Fox New Chicago) about Gehry's personal life, which provided a context for understanding his work. Watch video of the talk at youtu.be/Wry79diUYNM.

On an Elder's Trail: The Later Life of Charles M. Charnley

On April 20, 2016, SAH and **The Newberry Library** presented "On an Elder's Trail" with **Jack Perry Brown**, former director of The Ryerson and Burnham Libraries at The Art Institute of Chicago. Brown presented new research on the life and mysterious disappearance of Charles M. Charnley, the brother of the very private James Charnley who built the iconic Charnley House, which serves as SAH's headquarters. SAH was fortunate to have a direct descendent of

the Charnley family attending the program, who had an opportunity to visit with Jack Brown and Pauline Saliga at the Charnley-Persky House earlier in the day.

1. Naomi Miller, Ken Breisch, David Fixler, and Maureen Meister attend the SAH 75th Anniversary Reception at Harvard GSD
2. Pauline Saliga, Jack Perry Brown, Gail Charnley, and David Spadafora
3. Harvard Graduate School of Design students at the SAH 75th Anniversary Reception
4. Lee Bey and Paul Goldberger in conversation at the Chicago Humanities Festival



"On the Table": Creative Solutions to House and Feed All Chicagoans

On May 10, 2016, SAH, along with thousands of Chicago-area residents and organizations, participated in a day of conversations to discuss the future of our communities while sharing a meal. Organized by the **Chicago Community Trust**, the conversations put real issues and solutions "on the table," sharing commitments to helping shape Chicago's collective future. SAH's discussion brought together architects, food providers, and community leaders to discuss housing ideas for Chicago's homeless and creating communities that incorporate sustainable and affordable food supply. SAH Executive Director **Pauline Saliga** and staff members **Carolyn Garrett** and **Helena Dean** were joined by **Ameera Ashraf O'Neil**, UrbanWorks Architecture; **Peter Landon, FAIA** Landon Bone Baker Architects; **Jim Law**, Garfield Park Conservancy Alliance; **Susan Kane**, Blessings in a Backpack; and **Nadia Gronkowski**, Environmental Education Master's Candidate.



WTTW's Geoffrey Baer and Dan Protes Presentated by Pella Crafted Luxury

On April 11, 2016, a talk with WTTW Host **Geoffrey Baer** and Producer **Dan Protes** kicked off a lecture series presented in partnership with **Pella Crafted Luxury**, in their newly opened showroom at the Chicago Merchandise Mart, designed by SAH members **Stuart Cohen, FAIA** and **Julie Hacker, AIA** of Stuart Cohen & Julie Hacker Architects. Baer and Protes presented a preview of their architectural series "Ten That Changed America," which includes interviews with SAH members **Edward Bosley, Mary Corbin Sies, Gabrielle Esperdy, Paul Goldberger, Katerina Ruedi Ray, Francesca Russello Ammon, Robert A.M. Stern, Lynda Waggoner, Thaisa Way, and Robin Williams**. Attendees were treated to behind-the-scenes stories and the logic behind the locations chosen for the series. The producers consulted extensively with SAH during the series preparation. Visit interactive.wttw.com/ten to learn more about the series.



Richardson, Sullivan, Wright Presented by Pella Crafted Luxury

On June 16, 2016, SAH, the **Glessner House Museum**, and the **Frank Lloyd Wright Trust** presented a program in partnership with **Pella Crafted Luxury** on American architects H.H. Richardson, Louis Sullivan, and Frank Lloyd Wright. The talk focused on how their work continues to influence practicing architects today. **Stuart Cohen, FAIA** of Stuart Cohen & Julie Hacker Architects, **Aric Lasher, FAIA** of HBRA Architects, and **Kelly Bair** of Central Standard Office Design and UIC gave short presentations. **Alison Fisher**, the Harold and Margot Schiff Associate Curator of Architecture and Design at the Art Institute of Chicago, moderated a lively discussion after the presentations.

1. Carolyn Garrett, Jim Law, Ameera Ashraf O'Neil, and Pauline Saliga participate in "On the Table" at Charnley-Persky House
2. WTTW's Dan Protes and Geoffrey Baer talk about their series "Ten That Changed America"
3. Stuart Cohen, Kelly Bair, Alison Fisher, and Aric Lasher at Pella Crafted Luxury

FELLOWSHIPS + GRANTS



FELLOWSHIPS

Annual International Conference Fellowships

Rosann S. Berry Fellowship

Alexandra Quantrill, Columbia University

George R. Collins Fellowship

Christina Pech, Royal Institute of Technology, Sweden

Spiro Kostof Fellowship

Nancy Demerdash, Princeton University

SAH Annual International Conference Graduate Student Fellowships

Ioanna Angelidou, Yale University

Mehdi Azizkhani, Texas A&M University

Dan Handel, Technion Israeli Institute of Technology

Esra Kahveci, University of California, Los Angeles

Andres Pinzon, Illinois Institute of Technology

SAH Annual International Conference Independent Scholar Fellowship

Sebastian Chauffour, Institut National D'Histoire de L'Art, France

Laura Taylor, Mississippi State University

SAH Annual International Conference Senior Scholar Fellowships

Lionel Devlieger, Rotor VZW, Belgium

Ana Rigotti, Universidad Nacional de Rosario, Argentina

Michela Rosso, Politecnico di Torino, Italy

Dirk van den Heuvel, Technische Universiteit Delft, The Netherlands

Scott Opler Emerging Scholar Fellowships

Sigal Davidi, Tel Aviv University, Israel

Ruth Lang, Newcastle University, UK

Danielle S. Willkens, Auburn University

Scott Opler Graduate Student Fellowships

H.H. Joyce, University of Oxford, UK

Erin Que, University of Virginia

Elizabeth Self, University of Pittsburgh

SAH-Getty International Program

Sahar Al-Qaisi, Koya University, Iraq

Comfort Badaru, Anza Magazine, Uganda

Kamalika Bose, Urban Design Research Institute, India

Helena Bender, Federal University of Rio Grande do Sul,



SAH 2nd Vice President Sandy Isenstadt with 2016 SAH-Getty International Program participants Huda Tayob, Changxue Shu, Helena Bender, and Comfort Badaru at the SAH 2016 Pasadena/Los Angeles conference

Brazil

Asmaa Ibrahim, Cairo University, Egypt

A.K. Kasthurba, National Institute of Technology, Calicut, India

Fadila Kettaf, University of Sciences and Technology of Mohamed Boudief, Algeria

Yifei Liu, Beijing Forestry University, China

Fernando Martinez Nespral, University of Buenos Aires, Argentina

Julia Miranda Aloise, Architect, Brazil

Noleen Murray, Wits City Institute, University of Witwatersrand, South Africa

Changxue Shu, Needham Research Institute, UK

Ivan Strelbitsky, Center of Traditional Russian Culture, Russia

Shirley Surya, M+, Hong Kong

Huda Tayob, Bartlett School of Architecture, UCL, UK

Beverly Willis Architecture Foundation Travel Fellowship

Anooradha Siddiqi, Bryn Mawr College

Keepers Preservation Education Fund Fellowship

Emily Neumeier, University of Pennsylvania

Samuel H. Kress Foundation Fellowships

Muzzafer Ozgules, University of Oxford, UK

Matthew Walker, University of Oxford, UK

Latrobe Chapter Student Fellowship to SAH Annual Conference

Arian Korkuti, Virginia Tech University

George B. Tatum Annual International Conference Fellowship (Philadelphia Chapter)

Erin Putalik, University of Pennsylvania



Casa Vilamajó, Julio Vilamajó. Montevideo, Uruguay. (Liz Donato)

Research Fellowships & Grants

Charles E. Peterson Fellowship of the Buildings of the United States and the Athenaeum of Philadelphia

Hallie Borstel, Tulane University

Edila and François-Auguste de Montêquin Junior Fellowship

Savannah Esquivel, Northwestern University

2015 SAH Study Program Fellowships

Liz Donato, City University of New York
Jennifer Thomas, University of Illinois at Urbana-Champaign

HABS-SAH Sally Kress Tompkins Fellowship

Amber Bailey, Loyola University Chicago

H. Allen Brooks Travelling Fellowship (2015)

Danielle S. Willkens, Auburn University

SAH/Mellon Author Awards

Peter Christensen
Germany and the Ottoman Railways: Art, Empire, and Infrastructure (Yale University Press)

Itohan I. Osayimese
Colonialism and the Archive of Modern Architecture in Germany (University of Pittsburgh Press)

Robin Schuldenfrei

Luxury and Modernism: Architecture and the Object in Germany 1900–1933 (Princeton University Press)

SAH Membership Grants for Emerging Scholars

Angela Anderson, University of Victoria, Canada
Helen Blackmore, California Department of Transportation
Elisa Dainese, University of Pennsylvania
Kyle Dugdale, Yale University
Avni Gor, Opus Design
Lisa Hsieh, University of Minnesota
Kate M. Kocyba, AmeriCorps
David F. Lewis, Yale University
Aris D. Lindemans, New Jersey Institute of Technology
Maarten Liefoghe, Ghent University
John F. Lopez, Skidmore College
Eleonora Marrone, Independent Scholar
Whitney Martinko, Villanova University
Ulduz Maschaykh, Vancouver, Canada
Jeffrey A. Miller, University of Cambridge, UK
Sun-Young Park, George Mason University
Johna Picco, The Filson Historical Society
Mira Rai Waits, Harvard University
Wei Zhao, University of Utah

H. Allen Brooks Travelling Fellowship

The 2014 H. Allen Brooks Travelling Fellowship was awarded to architectural historian **Patricia Blessing** for one year of worldwide travel in 2015 and 2016. She visited architectural and cultural sites in Armenia, Bosnia, Croatia, Denmark, France, Germany, Italy, Israel, Kosovo, Lebanon, Macedonia, Morocco, Spain, Turkey, and the UK. Although her trip included visits to many of the medieval and early modern monuments her research centers on, the fellowship also gave her the chance to explore buildings from other periods and to assemble a broad image collection she can use in her teaching. She documented her travels in monthly posts published on the SAH Blog (sah.org/blog) and contributed suites of images to SAHARA, SAH's shared image archive for teaching and research. Read Patricia's reports at sah.org/brooks-reports.



"The Brooks Fellowship came at a crucial time in my career. It allowed me to develop new ideas for my research projects, to gather materials for teaching, but also to see monuments and cities that I had not been previously able to visit."

Patricia Blessing
H. Allen Brooks Travelling Fellow



1. View from courtyard, Süleymaniye Mosque, Istanbul (Patricia Blessing)
2. Page from Patricia Blessing's scrapbook
3. View of Talaa Kabira street in the medina of Fes, with Bou Inaniya Clock at left (Patricia Blessing)
4. Alhambra, Granada, view (Patricia Blessing)



1



2



3



4



5

1. Chora Church, southern dome of narthex with Christ Pantokrator (Patricia Blessing)
2. Church of the Mother of God, Noravank (Patricia Blessing)
3. Patricia Blessing in front of the apse from Santa Maria de Taull (A. Yaycioglu)
4. Sant'Apollinare in Classe, Ravenna, view towards apse (Patricia Blessing)
5. Dome of the Rock, Jerusalem (Patricia Blessing)



MEMBER OF COMMERCE

FUNDRAISING

SAH 6th Annual Awards Gala

SAH capped its 75th anniversary year with the 6th annual Awards Gala on Friday, November 6, 2015, at the Woman’s Athletic Club in Chicago. Approximately 200 fervent fans of historic architecture came together as SAH bestowed Pulitzer Prize-winning architecture critic **Paul Goldberger** with the Award for Architectural Journalism, architect **T. Gunny Harboe** with the Award for Heritage Conservation, and preservation advocate **Richard W. Longstreth**, a past president of SAH, with the Award for Architectural Scholarship and Preservation Advocacy. The 2015 gala was co-chaired by **Thomas Beeby, FAIA, Kirsten Beeby** and **Tom Rossiter, FAIA**. The event featured a tour of the Woman’s Athletic Club, a cocktail reception, auction, and awards presentation, and raised over \$100,000 to support SAH’s educational mission and ongoing restoration of its Landmark headquarters, the Charnley-Persky House.



1



2



3



4



5



6



7

1. Honorees Richard W. Longstreth, Gunny Harboe, and Paul Goldberger
2. Jody Mansueto, Julie Hacker, Stuart Cohen, and Jim Mansueto
3. Hope Alexander, Gunny Harboe, and Tom Rossiter
4. Janet Halstead and Zurich Esposito
5. Jeanne Gang and Paul Goldberger
6. Silent auction
7. Alicia Berg, Cynthia Weese, Ben Weese, and John Drummond



GRANTS

Alphawood Foundation Chicago



In January 2016, SAH received a \$123,000 grant from the **Alphawood Foundation Chicago** to hire **Harboe Architects, PC** to develop a conservation management plan for Charnley-Persky House. Designed by Adler and Sullivan in 1891–1892 when Frank Lloyd Wright was an apprentice in their office, Charnley-Persky House celebrated the 125th anniversary of its design in 2016 with a new conservation management plan that will assess the current physical state of the structure, identify potential problem areas, and establish conservation priorities for the continued health of the building. Charnley-Persky House serves as the headquarters of the Society of Architectural Historians. SAH is grateful to Alphawood Foundation Chicago for their critical support for Charnley-Persky House.

On April 21, 2016, the SAH staff had its first official meeting to launch the conservation management plan for Charnley-Persky House. The kick-off meeting, which also included architects from Harboe Architects and all of the contractors who would be gathering data and contributing recommendations to the plan, was the first of many discussions held in 2016 about the 125-year-old National Historic Landmark. The conservation management plan will document the current state of the house's structure and materials, provide advice on addressing potential problems, and outline conservation priorities and scheduled maintenance tasks so SAH staff can be proactive stewards of the house.

The Richard H. Driehaus Foundation



In 2016 SAH received the second \$50,000 grant from **The Richard H. Driehaus Foundation Fund at the Chicago Community Foundation**, part of a three-year grant of \$150,000 to support the Society's general operating activities. Unrestricted, general operating support provides critical resources and flexibility to SAH to allocate the funds where they are most needed for the organization's day-to-day administrative expenses and to carry out its programming. A portion of the grant was designated for exterior enhancements to Charnley-Persky House. On April 23, 2016, SAH installed new plantings in the front parkway gardens of the Charnley-Persky House, designed by Chicago landscape architect Daniel Weinbach of **Daniel Weinbach and Partners, Ltd.** The gardens feature densely-planted perennials that are both colorful and suitable for Chicago's seasonal temperature swings. SAH is in the process of securing bids for exterior lighting plans to illuminate the house at night. SAH is grateful to The Richard H. Driehaus Foundation for its generous support.

1. Charnley-Persky House exterior (Leslie Schwartz)
2. Parkway in front of Charnley-Persky House



The Andrew W. Mellon Foundation

In 2016, **The Andrew W. Mellon Foundation** awarded SAH a grant of \$60,800 to administer the **SAH/Mellon Author Awards** over the course of two years. These awards are designed to provide financial relief to scholars who are publishing their first monograph on the history of the built environment, and who are responsible for paying for rights and permissions for images or for commissioning maps, charts or line drawings in their publications. The publication of a monograph continues to be the most valued demonstration of scholarly competency for career advancement and recognition in the humanities. SAH is grateful to the Mellon Foundation for their generous support of scholarly research and higher education.



Through the Mellon grant, SAH will provide awards to scholars to help defray the high costs of image licensing, reproduction, and creation of original drawings and maps for monographs on the history of the built environment. This grant is intended as a seed grant to assist authors to pay for these costs and to secure other applicable grants. Awards will be made once in 2016 and once in 2017 for print and digital publications. Awardees will be selected on the basis of the quality and demonstrated financial need for their project.

The Gill Family Foundation

SAH was honored to receive a grant of \$25,000 from the **Gill Family Foundation** in 2016 to support and expand SAH's resources to graduate students. The grant spans a five-year period (2016–2020) and supports a range of services for graduate students, including fellowships to attend the SAH Annual International Conference and registration underwriting for graduate students chairing the conference's Graduate Student Lighting Talks and Graduate Student Roundtables. The grant also funds expansion of SAH's resources for graduate students organized on the SAH website, as well as supporting a Resources Manager to coordinate and build upon two of our most valuable online resources for graduate students—the list of completed and in-progress dissertations in the field of architectural history, and the list of Graduate Programs in Architecture and Related Fields. SAH's comprehensive resources for graduate students can be viewed at sah.org/graduate-student-resources. SAH is truly appreciative to the Gill Family Foundation for its support of our graduate student programming and other projects.



1. Image from *Colonialism and Modern Architecture in Germany* (University of Pittsburgh Press) by Itohan Osayimwese, with illustrations funded in part by a grant from the SAH/Mellon Author Awards. Postcard, "Cairo," Berlin Trade Exhibition, 1896, showing replica of Qaytbay Mosque (built 1488) with its distinctive minaret on the left. (Postcard from the author's collection.)

2. Image from *Luxury and Modernism: Architecture and the Object in Germany 1900–1933* (Princeton University Press) by Robin Schuldenfrei, with illustrations funded in part by a grant from the SAH/Mellon Author Awards. Tea corner in the Gropius House, Dessau, 1925-1926, gelatin silver print (Photograph by Lucia Moholy, 1926) Harvard Art Museum, Busch-Reisinger Museum, Gift of Ise Gropius, BRGA.21.122 © President and Fellows of Harvard College



SAH-Getty International Program

The 2016 SAH-Getty International Program, generously funded by **The Getty Foundation**, brought 15 architectural historians, museum curators, heritage conservationists, and planners to the conference from countries that have traditionally been underrepresented.

The purpose of the SAH-Getty International Program is to enable international academics, museum professionals, heritage conservationists, and architects to participate in the conference, to help them build their international professional networks, and to diversify and internationalize SAH membership. In this second year of the SAH-Getty program, the grantees were from Algeria, Argentina, Brazil, China, Egypt, India, Iraq, Hong Kong, Russia, South Africa, and Tanzania. Of the two men and thirteen women, there were six scholars, two curators of architectural collections, three heritage conservationists, and four architects working at academic institutions. Seven were in the early stages of their careers and eight were mid-career. The grantees each gave five-minute presentations so conference attendees could better understand their work and the issues they face, such as the challenges of working in Iraq to restore ancient sites when there is little or no documentation or information on the built heritage that has suffered so much damage. The SAH-Getty International Program covered the recipients' conference registration, travel expenses, hotel accommodations, and a two-year electronic SAH membership.

Top row: A. K. Kasthurba (India), Shirley Surya (Hong Kong), Asmaa Ibrahim (Egypt), Ivan Strelbitsky (Russia), Fernando Martínez Nespral (Argentina), Kamalika Bose (India), Fadila Kettaf (Algeria), Comfort Badaru (Tanzania), Noëleen Murray (South Africa), and Sahar Basil Al-Qaisi (Iraq). Bottom Row: Yifei Liu (China), Helena Bender (Brazil), Changxue Shu (China), Julia Miranda Aloise (Brazil), and Huda Tayob (South Africa).



The Getty Foundation

DONOR RECOGNITION 2015–16

The Society thanks the many individuals and organizations that made contributions to support SAH in 2016 (gifts made October 1, 2015–September 30, 2016).

Individual Gifts

\$50,000

Anonymous

\$10,000–\$49,999

Stephen Harby

\$5,000–\$9,999

Gretchen Redden
Marilyn L Schmitt

\$2,500–\$4,999

Suzanne Deal Booth
Tom Beeby, FAIA and Kirsten Beeby

\$1,000–\$2,499

Susan and Wayne Benjamin
Kenneth A. Breisch
John E. Cay III
Elizabeth Edwards Harris
Cynthia R. Field
R. Scott Gill
Richard R. Gray
Carol H. and Robert D. Krinsky
Henry H. Kuehn
Phyllis Lambert
Eileen M. Michels
John H. Nelson, FAIA
John K. Notz, Jr.
Deborah J. Slaton and Harry
Hunderman, FAIA
Danie and Diane Stillman
Robert and Susan Wislow
Konrad Wos

\$500–\$999

Christopher D. Armstrong
Thomas G. Beischer
Alicia and Brian Berg
Christopher G. Bird
Joe Connors
Neil Dawson

Douglas E. Gilbert
Brent W. and Catherine H. Gledhill
Judith Griffin
John M. and Marie M. Hara
Steven D. Hearst
Mary J. Hill
Kathleen James-Chakraborty
Miles Lewis
Christopher C. Mead
Keith N. Morgan
Tamara Morgenstern
Luigi H. Mumford
Kathleen Nagle and
Ralph Johnson, FAIA
Laurie M. and Michael Petersen
John and Meg Pinto
John L. Powell
Charles C. Savage
Mark and Michele Schara
Susan W. Schwartz
Robert A. M. Stern, FAIA
John G. Thorpe
Jeffrey T. Tilman
Abigail A. Van Slyck
David Van Zanten
John N. Vinci, FAIA
Bartholomew Voorsanger, FAIA

\$499 & Below

James M. Addiss
Barbara Ahlering
Donald Albrecht
Hope Alexander
Lois Allen
John Allen
Peter W. Ambler
Veronica E. Aplenc
Marc Appleton
John S. Arbuckle
Astrid Witschi
Mardges Bacon
Norman Balkin
Hilary M. Ballon
W. L. Barlow, IV, FAIA and
Connie Barlow
Marlene G. Baumgarten
Leslie L. Beller
Katharine L. Bensen
Edith S. Bingham

Anne H. Bird
F. L. Bissinger
Charles H. Bohl
Laurence O. Booth, FAIA
Richard L. Bowen
Susan D. Boyle
Susan Braden
Nancy J. Brcak
Carlos F. Brillembourg
Jack Perry Brown
David B. Brownlee
Gerardo Brown-Manrique
David Byrd
Wanda Bubriski
John A. Burns
Anthony F. Caldwell
Maristella Casciato
Jill E. Caskey
Frank Cavalier
Andrew W. Chandler
Winston Chappell
Swati Chattopadhyay
Richard Cheek
D. Sherman Clarke
Richard L. Cleary
Stuart E. Cohen, FAIA and Julie
Hacker, FAIA
Jean-Louis Cohen
Kim Coventry
Joan Craig
John D. Cramer
Thomas Dale
Lisa P. Davidson
Gail A. D'Avino
Elizabeth J. De Rosa
Dan Deibler
Dennis J. Dewitt
Sheila Donahue
Lu Donnelly
Steven Dotterer
Royce M. Earnest
Keith Eggener
Steven Ehlbeck
Phyllis Ellin
Nnamdi Elleh
Burak Erdim
Elizabeth Ervin
Jesús Escobar
Gail Fenske

Peter Fergusson
Frances Fergusson
Sheila ffolliott
David N. Fixler
Judith Freeman
Belmont Freeman, FAIA
Alice T. Friedman
Jeanne Gang, FAIA
Frank M. Garretson
Carolyn Garrett
Frank M. Garretson
Michael J. Gibson
Ethel S. Goodstein-Murphree
Makary Górzyński
R. Michael Graham
Lee E. Gray
Jan M. Grayson
Daniel P. Gregory
Carol E. Grove
James B. Guthrie
Dale A. Gyure
Dorothy M. Habel
John Haley
Melanie J. Hall
Kevin and Elaine Harrington
Dianne S. Harris
Marlene E. Heck
Matthew Heins
Marie P. Hertzberg
Alison K. Hoagland
Lois G. Holmes in Memory of
 Marietta Marsh
Thomas C. Holtz
Elizabeth Hornbeck
Deborah J. Howard
Colleen M. Humer
Deborah D. Hurtt
Timothy W. Hyde
Dorothee Imbert
Karla Irving
Sandy Isenstadt
Mary A. Jablonski
John J. Jameson
Virginia Jansen
Paul Jaskot
James E. Jewell
Eugene J. Johnson
Kyle Johnson
Darko Kahle
Mary Estelle Kennelly
Karen Kingsley
Richard and Lisa Kornblith

Ron Kovach
Francis R. Kowsky
Holly Krevitz
Lucien Lagrange
Rayford W. Law
Martin Lehnen
Joel Levinson
Evonne Levy
Michael Lewis
William Littmann
J. William Locke
Dirk Lohan, FAIA
Christopher Long
Rommy Lopat
Linda and Jonathan Lyons
Martha L. MacFarlane-Faes
Donna Magnani
Anne G. Maletta
Myra Malkin
Stephanie Manning
John A. Martine
Elisa Martinez-Glass
Judith P. McBrien
Hugh J. McCauley
Abby McGehee
Courtenay C. McGowen
Mary McLeod
Chad McPhail
Martha J. McNamara
Maureen I. Meister
Ann Merritt
Susan Messenger
Conrad Miczko
Robin D. Middleton
Mary P. Miller
Henry A. Millon
Joshua J. Mintz
Marvin B. Mitchell
Richard T. Moeckel
Charles Moore
John E. Moore
Suzanne Morgan
Donald Morley
Sarah Rogers Morris
James Morrison
Patricia A. Morton
Kelema Moses
Richard J. Moylan
Kevin D. Murphy
Theodore H. Myer
Erik H. Neil
Richard B. Nettler

Robert Olguin
Christine O'Malley
Ken Tadashi Oshima
Carter Page
Edward J. Pass
Peter Pennoyer, FAIA
Jean Paul Pentecoteau
Alison Perchuk
Brian R. Percival
Kathryn Petersen-Paleczny
R.G. Peterson
Barbara G. Pine
Geraldine Pontius
Elisabeth W. Potter
Theodore Prudon
Jacqueline T. Purcell
Kathryn Quinn
Virginia C. Raguin
Janet Rankin
Jeannette M. Redensek
Peter S. Reed
Victoria Reed
D. Nels Reese
Jonathan M. Reynolds
Elizabeth H. Riorden
Charles Robertson
Barbara Robinson
Louis Rocah
Judith C. Rohrer
William C. Roskam
Leland M. Roth
D. Fairchild Ruggles
Michelangelo Sabatino
Ricki F. Sablove
Ronald Scherubel
Thomas R. Schiff
Melanie Schofield
Franz Schulze
Barry A. Sears
Robert N. Shapiro
Peter K. Shepherdson
Michael T. Sillerman
Larry Simon
David Smiley
Patrick Snadon
R.R.S. Stewart
Janet Surkin
Kim Tanzer
Jennifer Tate
John Terry
Dell Upton
Valerie Foradas

Susan Van der Meulen
 Annemarie van Roessel
 D'juro Villaran-Rokovich
 Sabine von Fischer
 Darrin M. Vonstein
 Patricia Waddy
 Christa Walck
 Charles D. Warren
 Arete S. Warren
 Annamarie Weaver
 Cynthia Weese, FAIA and
 Ben Weese, FAIA
 Amy S. Weisser
 Linda R. Weld
 Dennis M. Whelan
 Marguerite White
 Jay Wickersham
 Stephen Wierzbowski
 David Wilkins
 Carol A. Willis
 Danielle S. Willkens
 Robert W. Winter
 Robert Wojtowicz
 Dale P. Wolicki
 Mary N. Woods
 Mary Woolever
 John Woolsey
 Barbara Yanni
 Victoria M. Young
 Craig R. Zabel
 Frank Zwart

Foundation, Government & Corporate Gifts

\$100,000 & Above

Alphawood Foundation Chicago
 National Endowment for the Humanities

\$50,000–\$99,999

Andrew W. Mellon Foundation
 The Richard H. Driehaus Foundation
 The Richard H. Driehaus Fund of the Chicago Community Foundation

\$25,000–\$49,999

Gill Family Foundation

\$10,000–\$24,999

Petersen Aluminum Corporation

HBRA Architects
 Tawani Foundation

\$5,000–\$9,999

Berglund Construction
 University of Notre Dame School of Architecture

\$2,500–\$4,999

Booth Hansen Architects
 Holabird and Root LLC
 MSU College of Architecture, Art and Design
 Pella Windows and Doors
 The Athenaeum of Philadelphia

\$1,000–\$2,499

AIA Chicago
 Anonymous
 Craig Bergmann Landscape Design, Inc.
 Brinshore Development, LLC
 Central Building and Preservation
 Chicago Chapter SAH
 Maine Community Foundation
 McKay Landscape Architects
 Mid-Continent Capital, LLC
 New York Institute of Technology, School of Architecture and Design
 Sameul H. Kress Foundation
 Sheehan Partners
 Sylvester Construction Services, Inc.
 Wheeler Kearns Architects
 Wos & Wos Development Corp.

\$500–\$999

Blue Star Properties, Inc.
 Edward Cella Art and Architecture
 Florian Architects
 J. Lawton Thies Architects Inc.
 Leslie Jones and Associates, Inc.
 William and Marjorie Kriebel
 Krueck and Sexton Architects
 Linn-Mathes Inc.
 Ostrow Reisin Berk-Abrams, Ltd.
 Pepper Construction Company
 Southeast Chapter SAH
 Page and Turnbull
 University of Southern California School of Architecture
 Windsor Builders, Inc.

\$499 & Below

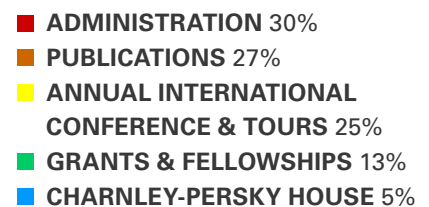
Benjamin Marshall Society
 Bulley and Andrews. LLC
 Dixie Sayre Miller Fund of the Columbus Foundation
 Cotter Consulting
 Frank Lloyd Wright Trust
 Orchard Foundation
 Pfizer Foundation Matching Gifts
 Photographic Arts Council Los Angeles
 Robinson and Associates, Inc.

FINANCIALS

FY2016 Revenues



FY2016 Expenses



MEMBERSHIP

Member Recognition

SAH recognized new 25-year and 50-year members at its 2016 Annual International Conference in Pasadena/Los Angeles, California.

New 25-Year Members

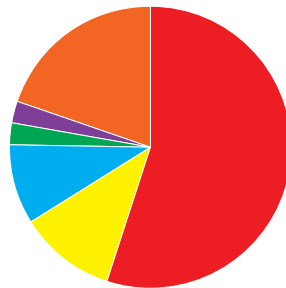
Samuel D. Albert
 Jhennifer A. Amundson
 Jose Bernardi
 Barbara S. Christen
 Ahmet Ersoy
 Carol A. Flores
 Brent Harris
 Elizabeth Edwards Harris
 Richard L. Hayes
 Steven D. Hearst
 Gary Inman
 Cigdem Kafescioglu
 Branko Mitrovic
 John E. Moore
 Eric P. Mumford
 Dietrich Neumann
 Edmund Ord
 Richard G. Peterson
 Jonathan M. Reynolds
 Kim S. Sexton
 Edgar Tischner
 Dale P. Wolicki

New 50-Year Members

Randall J. Biallas
 John C. Donoghue
 Robert Grant Irving
 Richard W. Longstreth
 J. P. McAleer
 John F. Millar
 Christopher P. Monkhouse
 Thomas M. Ridington
 Earle G. Shettleworth
 Linda C. Stanley
 Ward M. Stanley
 Patricia Waddy

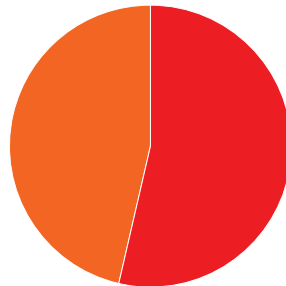
FY2016 Membership Categories

- **INDIVIDUAL** 1659
- **STUDENT** 336
- **UPPER LEVEL** 272
- **PROFESSIONAL ASSOCIATE** 77
- **JOINT** 76
- **INSTITUTIONAL** 586 (includes **SUSTAINING** 5)



FY2016 Membership Delivery

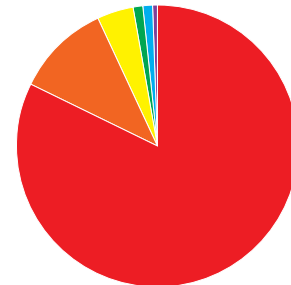
- **PRINT & ELECTRONIC** 54%
- **ELECTRONIC** 46%



FY2016 Geographic Distribution

Geographic distribution of Individual Membership categories (includes Student, Upper Level, Professional Associates, and Joint members.)

- **NORTH AMERICA** 1993
- **EUROPE** 261
- **ASIA** 101
- **MIDDLE EAST** 28
- **SOUTH AMERICA** 25
- **AFRICA** 12



SAH CHAPTERS & PARTNERS

SAH Chapters

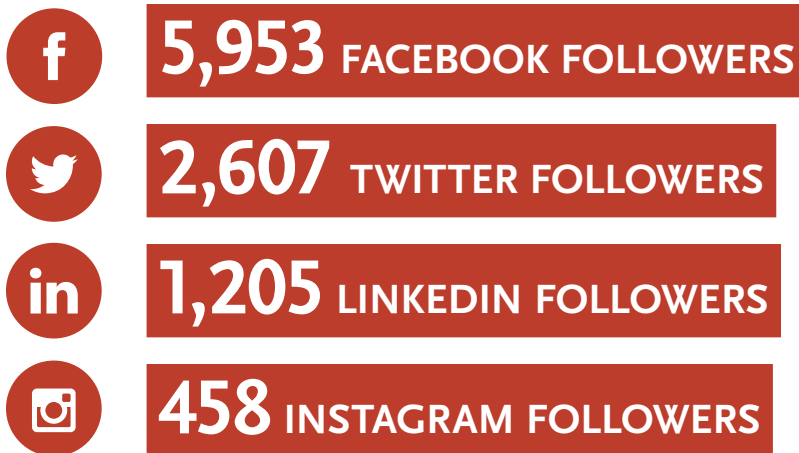
Chicago Chapter
Landscape History Chapter
Latrobe Chapter (Washington, DC)
Louise Bethune Chapter (Buffalo, NY)
Marion Dean Ross/Pacific Northwest Chapter
Minnesota Chapter
New England Chapter
New York Metropolitan Chapter
Northern California Chapter
Oglethorpe Chapter (Savannah College of Art and Design)
Philadelphia Chapter
Pittsburgh Chapter
Saint Louis/Missouri Valley Chapter
Southeast Chapter
Southern California Chapter
Thomas Jefferson Chapter (University of Virginia)
Turpin Bannister Chapter (upstate New York)
Western Reserve Chapter (Cleveland, OH)
Wisconsin Chapter

Association of Architecture Organizations (AAO)
Association Villard de Honnecourt for the Interdisciplinary
Study of Technology, Science, and Art (AVISTA)
Beverly Willis Architecture Foundation (BAAF)
Construction History Society of America (CHSA)
Decorative Arts Society (DAS)
Docomomo US
European Architectural History Network (EAHN)
Historians of Islamic Art Association (HIAA)
International Association for the Study of Traditional
Environments (IASTE)
International Coalition of Sites of Conscience
Italian Art Society (IAS)
National Building Museum
National Committee for the History of Art (NCHA)
National Humanities Alliance (NHA)
SAH Australia/New Zealand (SAHANZ)
SAH Great Britain (SAHGB)
Society for Industrial Archaeology (SIA)
Society for the History of Technology (SHOT)
Society for the Study of Architecture in Canada (SSAC)
Society of Historians of Eastern European, Eurasian and
Russian Art and Architecture (SHERA)
Urban History Association (UHA)
Vernacular Architecture Forum (VAF)
Visual Resources Association (VRA)

Partner Organizations

AIA Historic Resources Committee
Art Libraries Society of North America (ARLIS/NA)
Association for Preservation Technology (APT)

SOCIAL MEDIA STATS



*Statistics as of September 30, 2016

SAH BOARD & STAFF 2015–16

SAH Board members serve three-year terms that expire at the end of the SAH Annual International Conference. Officers serve one-year terms, renewable once.

SAH Officers

President

Ken Tadashi Oshima (until April 2018)
University of Washington

Kenneth Breisch (until April 2016)
University of Southern California

First Vice President

Sandy Isenstadt (until April 2018)
University of Delaware

Ken Tadashi Oshima (until April 2016)
University of Washington

Second Vice President

Victoria Young (until April 2018)
University of St. Thomas

Sandy Isenstadt (until April 2016)
University of Delaware

Secretary

Kathryn O'Rourke
Trinity University

Gail Fenske (until April 2016)
Roger Williams University

Treasurer

Michael J. Gibson
Greenberg, Whitcombe, Takeuchi,
Gibson & Graver, LLP

Executive Director

Pauline Saliga

Directors

Christopher Drew Armstrong (until 2017)
University of Pittsburgh

Maristella Casciato (until 2018)
The Getty Research Institute

Luis M. Castañeda (until 2017)
Syracuse University

Edward Dimendberg (until 2019)
University of California, Irvine

Anat Geva (until 2019)
Texas A&M University

R. Scott Gill (until 2017)
University of Texas at Austin

Dale A. Gyure (until April 2016)
Lawrence Technological University

Richard L. Hayes (until April 2016)
Alexandria, VA

Greg Hise (until 2017)
University of Nevada, Las Vegas

Timothy Hyde (until 2018)
Massachusetts Institute of Technology

Aric Lasher (until 2018)
HBRA Architects

Martha J. McNamara (until April 2016)
Wellesley College

Jorge Otero-Pailos (until 2018)
Columbia University

David Rifkind (until 2019)
Florida International University

D. Fairchild Ruggles (until 2018)
University of Illinois at
UrbanaChampaign

Arijit Sen (until 2019)
University of Wisconsin, Milwaukee

Abby Smith Rumsey (until April 2016)
Scholarly Communication Institute

Michelangelo Sabatino (until April 2016)
Illinois Institute of Technology

Cynthia Weese (until 2017)
Weese Langley Weese Architects

Claire Zimmerman (until 2019)
University of Michigan

Ex Officio

Bryan Clark Green
Commonwealth Architects

Karen Kingsley
Editor-in-Chief and Managing Editor
Buildings of the United States
Tulane University, Emerita

Jeffrey Klee
SAHARA Co-Editor
Colonial Williamsburg

Patricia A. Morton
JSAH Editor
University of California, Riverside

Virginia Price
SAH Chapter Liason
Southeast Chapter SAH

Jacqueline Spafford
SAHARA Co-Editor
University of California, Santa Barbara

Victoria Young (until April 2016)
SAH Chapter Liason
University of St. Thomas

SAH Staff

Pauline Saliga

Executive Director

Anne Bird

Director of Membership

Catherine Boland Erkkila

SAH Archipedia Project Editor

Helena Dean

Director of Communications

Beth Eifrig

Comptroller

Carolyn Garrett

Director of Development

Chris Higgins

Program Coordinator

Karen Kingsley

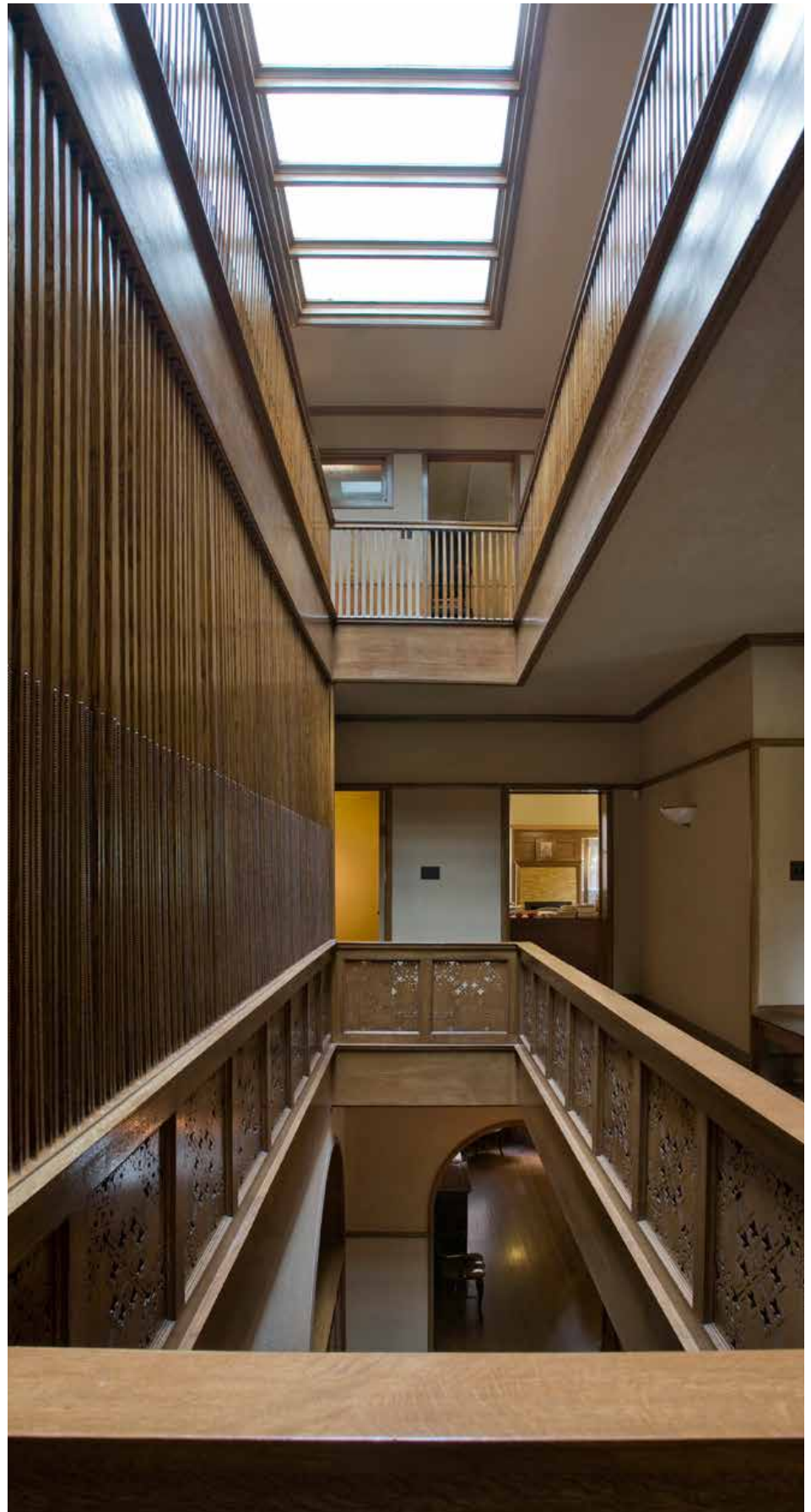
Editor-in-Chief and Managing Editor
Buildings of the United States

Christopher Kirbabas

Director of Programs

Kathy Sturm (until May 2016)

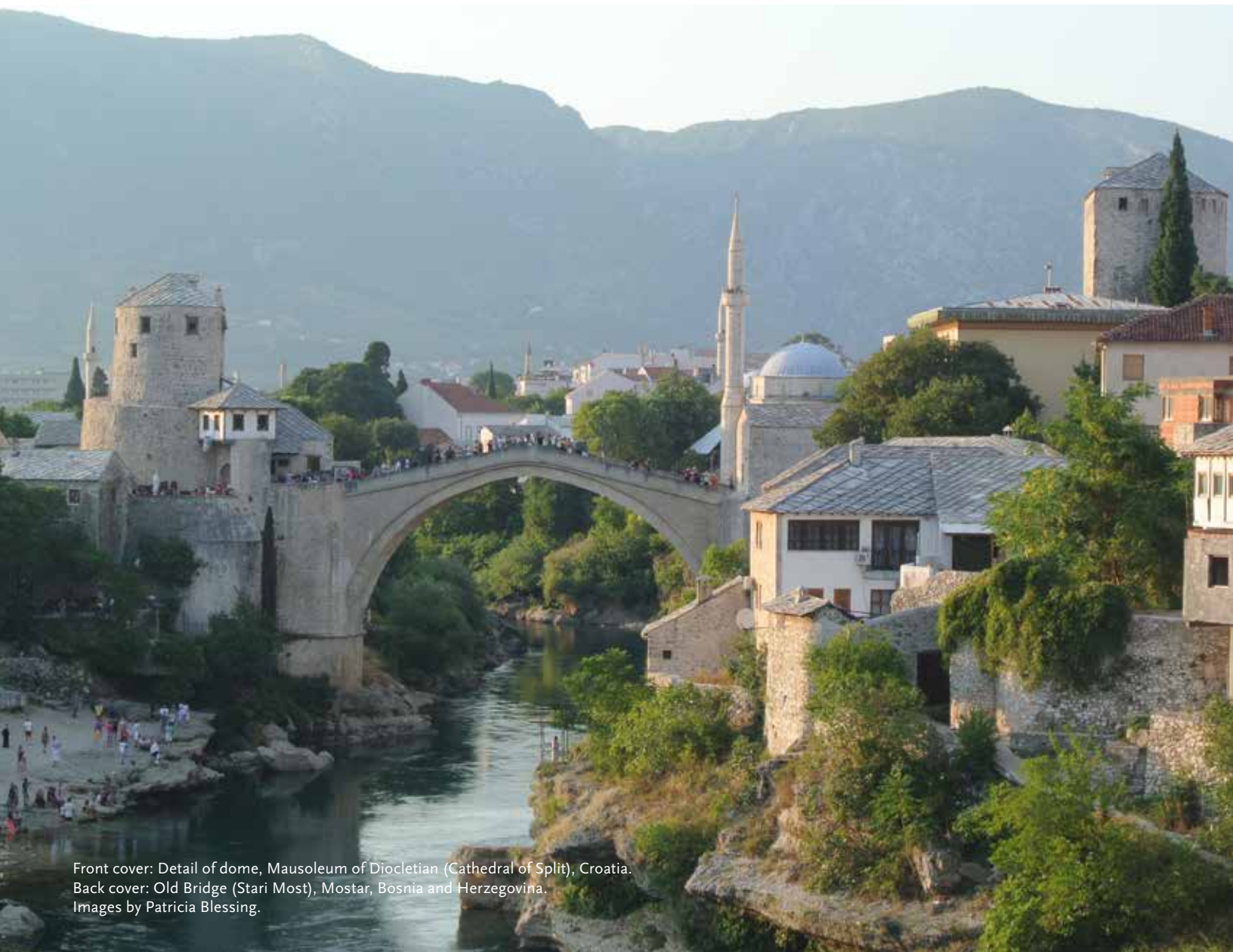
Director of Programs



View from second floor of the Charnley-Persky House. (Leslie Schwartz)

**SOCIETY OF
ARCHITECTURAL
HISTORIANS**

Society of Architectural Historians
1365 North Astor Street
Chicago, Illinois 60610-2144



Front cover: Detail of dome, Mausoleum of Diocletian (Cathedral of Split), Croatia.
Back cover: Old Bridge (Stari Most), Mostar, Bosnia and Herzegovina.
Images by Patricia Blessing.