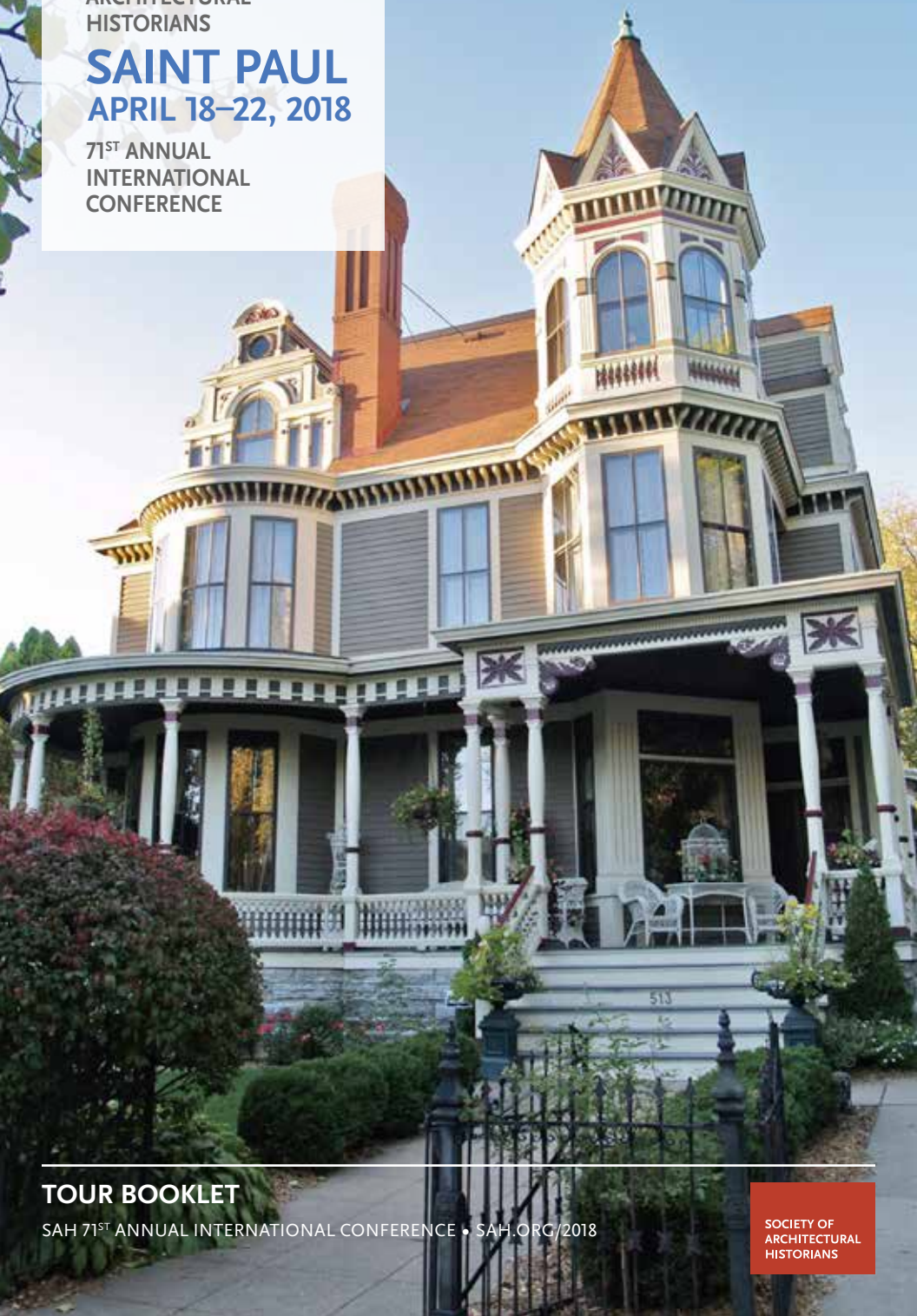


SOCIETY OF
ARCHITECTURAL
HISTORIANS

SAINT PAUL

APRIL 18–22, 2018

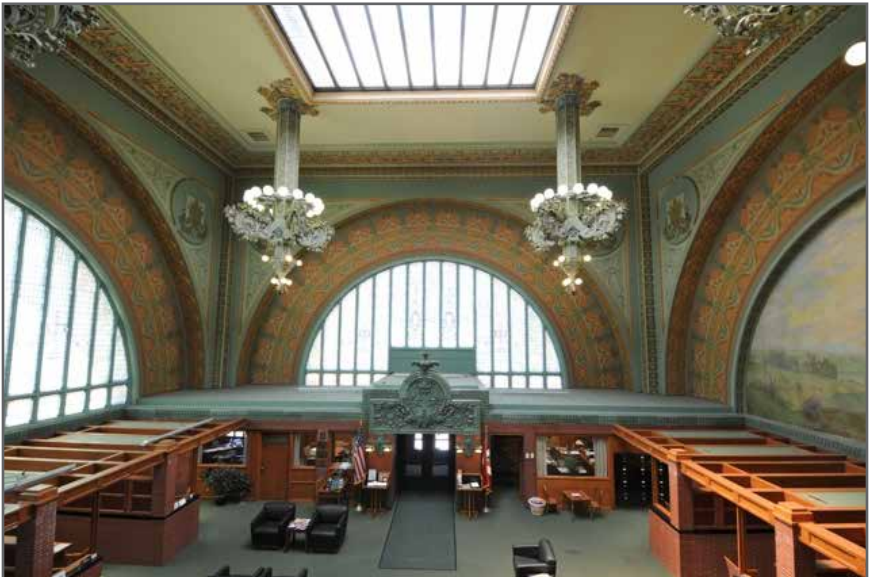
71ST ANNUAL
INTERNATIONAL
CONFERENCE



TOUR BOOKLET

SAH 71ST ANNUAL INTERNATIONAL CONFERENCE • SAH.ORG/2018

SOCIETY OF
ARCHITECTURAL
HISTORIANS



Clockwise from top left: Herzog & de Meuron, Walker Art Center addition, Minneapolis, 2006. Photo courtesy of Meet Minneapolis. / Frank Gehry, Weisman Art Museum, Minneapolis, 1993/2011. Photo from SAH *Archipedia*, courtesy of Keith Pille. / Banking Room in Louis Sullivan and George Grant Elmslie, National Farmers' Bank, Owatonna, Minnesota, 1907-1908. Photo by John Clouse, courtesy of Richard Kronick. / Schmidt Brewery Complex, St. Paul, 1855 and following. Photo by McGhievr via Wikimedia Commons.

Cover: House on Summit Avenue. Credit Visit Saint Paul.

Tour Booklet

April 18–22, 2018

Saint Paul RiverCentre

175 West Kellogg Blvd

Saint Paul, Minnesota 55102

Contents

Tour Information	2
Mobility Key	2
Icons Key	2
Tours at a Glance	3
Wednesday Tours	4
Thursday Tours	6
Friday Tours	8
Saturday Tours	10
Sunday Tours	13

Conference Mobile Guide

The free official conference mobile guide offers the most up-to-date tour information. To download, visit sah.org/2018/guide.

Tour Information

All tours will depart from the Kellogg Lobby of the Saint Paul RiverCentre, 175 West Kellogg Blvd.

The Kellogg Lobby is located at the street level. Look for the "Tours Meet Here" signage. Volunteers will check you in and collect tickets before turning you over to the tour leader(s). **Times noted for each tour indicate the time the tour will depart from the Kellogg Lobby and the time the tour will return to the Saint Paul RiverCentre. Please plan to arrive a few minutes prior to your tour departure. You must present a ticket for each tour you plan to attend.**

Tour capacity is not determined by the number of seats on the motor coach, but rather by the maximum number of visitors the site can accommodate. SAH limits the capacity when necessary to ensure a high-quality tour experience for our members.

If public transportation is involved, please try to purchase your transit tickets ahead of time to avoid delays and to ensure the tour remains on schedule. If you are unable to purchase your ticket in advance you can purchase them day of. An All-Day Pass cost on the weekends is \$4.00. Visit metrotransit.org for tickets and information.

Please read all tour descriptions carefully, noting the mobility level (see key below). If lunch is not included, please plan your lunch accordingly. In order to minimize the conference's eco-footprint, bottled water will not be provided. Please bring your own bottle and fill it prior to the start of your tour.

Mobility Levels Key


ML1: Walk a few blocks, climb stairs, get on and off a motor coach easily, stand for short periods of time.

ML2: In addition to ML1, climb a few flights of stairs, walk on uneven surfaces, maintain a walking speed with the majority of the participants, and stand for approximately 10–15 minutes.

ML3: In addition to ML2, longer standing and walking periods, various terrains, long driveways, steep driveways, several flights of stairs, unpaved areas, and stand for approximately 30 minutes.

* This tour is NOT wheelchair accessible.


Icons Key

 = ticketed at an additional cost

 = walking tour

 = charter bus included

 = lunch included

 = public transit required

Tours at a Glance

- TR01 Downtown Minneapolis Highlights
- TR02 Built/Unbuilt: Original Works in the Northwest Architectural Archives
- TR03 Purcell and Elmslie: Masters of Prairie School Architecture
- TR04 Iconic Religious Sites in Minneapolis and Saint Paul
- TR05 Religious Sites Walking Tour of Downtown Saint Paul
- TR06 The Lowertown Historic District
- TR07 Rice Park: An Intimate Enclosure Gives Grace to a City
- TR08 Modernism and Saint Paul's Urban Renewal
- TR09 Downtown Deco
- TR10 Preservation Successes in Saint Paul
- TR11 The Historic Irvine Park Neighborhood
- TR12 The Prairie School (and More) in Southern Minnesota
- TR13 Between the Cores: The Built History of University Avenue
- TR14 Challenges at Contested Sites: Mississippi River and Fort Snelling
- TR15 University of Minnesota: Renovation and Renewal
- TR16 Minneapolis Art Museum Highlights
- TR17 Cass Gilbert in Saint Paul
- TR18 From Lager Houses to Craft Brewing: Making Beer in the Twin Cities
- TR19 Saint John's Abbey and University: Breuer and Beyond
- TR20 Frank Lloyd Wright: The Willey House in Minneapolis
- TR21 Purcell and Elmslie: Masters of Prairie School Architecture
- TR22 Summit Avenue: Saint Paul's Grand Boulevard
- TR23 The University Grove: Modernist Houses
- TR24 Along the Mississippi: Past, Present, and Future
- TR25 Twin Cities Parks: Landscape Architecture for the West
- TR26 Modernism in Minnesota
- TR27 Frank Lloyd Wright: The Willey House in Minneapolis
- TR28 Frank Lloyd Wright: The Willey House in Minneapolis
- TR29 Frank Lloyd Wright: The Willey House in Minneapolis



Alcuin Library interior, Marcel Breuer & Associates (1964–1966).
Photo courtesy of Saint John's Abbey Archives.

TR01

Downtown Minneapolis Highlights

Tim Quigley, Quigley Architects, Tour Leader



1:00–5:00 p.m. • \$35 • AIA CES: 4 LU • ML3 • Capacity: 20

This combined bus and walking tour will explore the significant post-war structures of the business district core, concentrating on towers by Johnson & Burgee, Pelli, Pei Cobb Freed, SOM, Birkerts, and Yamasaki. We will also see the distinctive second-level skyway system, the Nicollet Mall, Peavey Plaza, and cultural landmarks by Hardy Holzman Pfeiffer and Nouvel. Much of the downtown core will be explored by a walking tour, rather than by bus.

TR02

Built/Unbuilt: Original Works in the Northwest Architectural Archives

Barbara Bezat, University of Minnesota, and Cheryll Fong, University of Minnesota, Tour Leaders



1:00–5:00 p.m. • \$35 • AIA CES: 4 LU • ML2 • Capacity: 40

This tour will visit the Northwest Architectural Archives, part of the University of Minnesota Libraries, highlighting particularly significant and beautiful original drawings and renderings by Harvey Ellis, William Gray Purcell, Clarence Wigington, John H. Howe, James Knox Taylor, Cass Gilbert and others. Interim Curator Cheryll Fong and retired archivist Barbara Bezat will give brief presentations about the collections and the facility. The route for our return to the RiverCentre will take us past some of the structures seen in the drawings at the Archives.

TR03

Purcell and Elmslie: Masters of Prairie School Architecture

Rolf Anderson, Historical Consultant, Tour Leader



1:00–5:00 p.m. • \$50 • AIA CES: 4 LU • ML2* • Capacity: 30

The partnership of William Gray Purcell and George Grant Elmslie became one of the leading architectural practices of the early twentieth century and emerged as the most important Minnesota firm within the Prairie School. The tour will include the exteriors of several buildings by the firm as well as the interiors of two residences, including the Purcell-Cutts House. Designed in 1913 for Purcell and his family, the Purcell-Cutts House is considered one of the most important examples of Prairie School architecture in the United States. The residence is particularly notable for its innovative spatial planning and extensive ornamentation. Restored by the Minneapolis Institute of Art, the building is now part of their collection. Price includes admission fee for the Purcell-Cutts House.

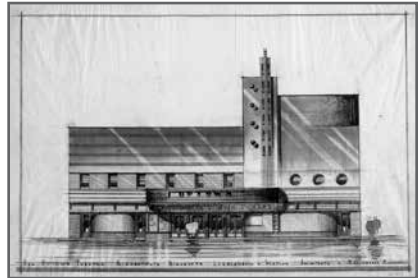
Iconic Religious Sites in Minneapolis and Saint Paul

Jeanne Halgren Kilde, University of Minnesota, and Robert Ferguson, University of St. Thomas and University of Minnesota, Tour Leaders



1:00–5:00 p.m. • \$35 • AIA CES: 4 LU • ML2* • Capacity: 28

This tour will visit some of the most memorable sites in the Twin Cities. Saint Paul's blufftop Indian Mounds Park preserves prehistoric Hopewell culture burial mounds. Lakewood Cemetery in Minneapolis is the home of Harry Wild Jones's Byzantine-revival jewel box, Memorial Chapel (1906), and HGA's (Joan Soranno and John Cook) Garden Mausoleum and Reception Center (2012). Additional stops will be at Eliel and Eero Saarinen's luminous Christ Church Lutheran (1949/1959); Erich Mendelsohn's final building, Mount Zion Temple (1953); Cass Gilbert's diminutive and charming Virginia Street Swedenborgian Church (1886), and Emmanuel Masqueray's monumental Cathedral of St. Paul (1915).



Top (L-R): Pelli Clarke Pelli Architects, Minneapolis Central Library, 2006. Photo courtesy of Meet Minneapolis. / Liebenberg & Kaplan, Uptown Theatre, Minneapolis, Minnesota, 1939. Photo from the Liebenberg and Kaplan Papers, Northwest Architectural Archives, University of Minnesota Libraries.

Bottom (L-R): Purcell, Feick, and Elmslie, Edna S. Purcell House, Minneapolis. 1913. Photo from *SAH Archipedia*, courtesy of Minneapolis Institute of Art. / Harry Wild Jones, Lakewood Memorial Chapel, Minneapolis, 1906. Photo from *SAH Archipedia*, courtesy of Clare Ave Monardo.

TR05

Religious Sites Walking Tour of Downtown Saint Paul

Jeanne Halgren Kilde, University of Minnesota, and Robert Ferguson, University of St. Thomas and University of Minnesota, Tour Leaders



1:30–2:45 p.m. • \$20 • AIA CES: 1.25 LU • ML2* • Capacity: 20

This short walking tour will introduce several prominent sites in downtown Saint Paul, taking advantage of distant views that the hilly topography provides. The tour will begin with an overview of the Mississippi River that will situate the city within the earlier Native American landscape that included prehistoric Hopewell burial mounds (listed on the National Register of Historic Places), Wakan Tipi cave, which was considered by the Dakota to be their birthplace, connected with the stars, and the Dakota village of Kaposia. Turning inland from the river, the tour will wind through the downtown area, providing views of such notable buildings as the Cathedral of St. Paul (1915, Emmanuel Masqueray) and the State Capitol (1905, Cass Gilbert). Stops along the way will include Central Presbyterian Church (1889, Warren H. Hayes), St. Louis King of France (1910, Masqueray) and Church of the Assumption (1874, Eduard Riedel).

TR06

The Lowertown Historic District

Rolf Anderson, Historical Consultant, Tour Leader



1:30–2:45 p.m. • \$20 • AIA CES: 1.25 LU • ML3* • Capacity: 20

Located immediately to the northeast of St. Paul's downtown business district, the Lowertown Historic District developed in the late nineteenth and early twentieth centuries as the city's warehouse and wholesale district. Its name is derived from its proximity to the Lower Landing on the Mississippi River, which was a major docking point during the steamboat era that was later filled with rail lines. Centered on Mears Park, Lowertown's historic warehouses were designed by leading architects of the day, including Cass Gilbert. They represent a range of styles popular during the era. After a long period of decline, artists and residents began to populate Lowertown's warehouses. The revitalization of the district was spurred by the nonprofit Lowertown Redevelopment Corporation, created in 1978 through a private/public partnership. Today Lowertown is a vibrant, thriving community. A recent addition to Lowertown is CHS Field, a ballpark for the St. Paul Saints that is sensitively integrated into the historic district.

TR07

Rice Park: An Intimate Enclosure Gives Grace to a City

Bob Roscoe, Design for Preservation, Tour Leader



1:30–2:45 p.m. • \$20 • AIA CES: 1.25 LU • ML3 • Capacity: 20

This tour explores Rice Park's remarkable coming into being during downtown Saint Paul's nascent mid-nineteenth-century beginnings. Rice Park dates its origins to the city's earliest days and before Minnesota became a state. In the past 160 years, the park has developed into a beautiful small-scale, open space that experienced history-stirring public events, providing the locus for the city's cultural and architectural presence that thrive there today.

Today park visitors can experience its diminutive space offering an intimate enclosure. The tour will offer a historical narrative of the park's landscape. A description of the excellent surrounding array of significant architectural styles will outline Saint Paul's historical growth. Rice Park's role in saving nearly all of its early twentieth century architectural edifices also provided the beginnings of the historical preservation movement in America's Upper Midwest.

TR08

Modernism and Saint Paul's Urban Renewal

Todd Grover, MacDonald and Mack Architects, Tour Leader



1:30–2:45 p.m. • \$20 • AIA CES: 1.25 LU • ML3 • Capacity: 20

Like many downtown cores in the 1960s, Saint Paul was yearning to counteract the flight of businesses leaving for the surrounding suburbs. Yet private investment was lackluster until the Metropolitan Improvement Committee commissioned the Capitol Center plan, in which the city would purchase twelve blocks of blighted buildings and then resell them to private developers. Supported by a \$19 million federal grant, the fabric of downtown Saint Paul was remade between 1965 and 1974 with modernist office towers and plazas. This walking tour will explore these and other highlights of modernism, including the 1966 gleaming aluminum and glass Ecolab building by Bergstedt Wahlberg and Wold (1968), the Minnesota Mutual Life Insurance Building by Ellerbe Associates (1955), and the Northwestern National Bank Building by Grover Diamond Associates (1971).

TR09



Downtown Deco

Brian Horrigan, Minnesota Historical Society, Tour Leader

1:30–2:45 p.m. • \$20 • AIA CES: 1.25 LU • ML2 • Capacity: 20

Downtown Saint Paul has a lovely collection of Art Deco gems within a small radius just east of the RiverCentre and Rice Park. Cap Wigington's Roy Wilkins Auditorium (1932) is part of the RiverCentre complex. Two technology companies—Tri-State Telephone (Clarence Johnston, Jr., 1937) and Northern States Power (Ellerbe, 1932)—chose the modern style for their headquarters. Standing between these two buildings are the city's undisputed Art Deco masterpieces: the Women's City Club (Magnus and Elsa Jemne, 1931) and the St. Paul City Hall and Ramsey County Courthouse (Holabird and Root with Ellerbe, 1932). While the exteriors display the expected Art Deco features, the interiors provide numerous and remarkable expressions of the style, including lavish materials and a Carl Milles sculpture (1936) inside the City Hall/Courthouse.

TR10



Preservation Successes in Saint Paul

Erin Hanafin Berg, Preservation Alliance of Minnesota, Tour Leader

1:30–2:45 p.m. • \$20 • AIA CES: 1.25 LU • ML3* • Capacity: 20

Although many historic buildings in downtown Saint Paul were lost in mid-century urban renewal projects, the city managed to keep a number of significant spaces, now acknowledged as indispensable parts of the urban fabric. This tour will visit the Landmark Center, a former U.S. Federal Building (Willoughby Edbrooke, 1902/1908) dramatically saved from demolition in 1968, and the recently renovated and repurposed Pioneer Endicott complex, a skyscraper designed as offices for the St. Paul Pioneer Press (Solon Beman, 1889) surrounded by the L-shaped Endicott Building (Cass Gilbert and James Knox Taylor, 1890), now apartments, live-work space, retail, and the home of the Minnesota Museum of American Art. The tour will also highlight other projects along the route—completed, underway, or planned.

TR11



The Historic Irvine Park Neighborhood

Kristin Anderson, Augsburg University, Tour Leader

1:30–2:45 p.m. • \$20 • AIA CES: 1.25 LU • ML3* • Capacity: 20

Located near one of Saint Paul's original steamboat landings and centered around one of the city's three original parks (1849), the small Irvine Park neighborhood includes some of Saint Paul's oldest surviving houses. These dwellings represent most of the popular nineteenth-century residential styles, including a rare Gothic Revival house. Yet while the houses surrounding this little park seem to form

an intact remnant of the city's early days, a number of these buildings originated at other locations and were moved to the park in the 1970s, when nineteenth-century houses here and elsewhere were threatened by age, decay, and urban renewal. As a result, Irvine Park and its houses tell more than one story about architecture and urban development in St. Paul.



FRI | APRIL 20



Top (L-R): Holabird and Root, St. Paul City Hall/Ramsey County Courthouse, 1932. Photo from *SAH Archipedia*, courtesy Sam Wisneski. / Cass Gilbert and James Knox Taylor, Endicott Building Arcade, St. Paul, 1890. Photo by Eric Mueller, courtesy of ericmuellerphotography.com.

Bottom (L-R): Irvine Park Fountain. Photo by Robert Ferdinandt, courtesy of Visit Saint Paul. / Willoughy Edbrooke, et al, Federal Building, St. Paul, 1902/1908. Photo by Jim Jerskey, courtesy Visit Saint Paul.

TR12

The Prairie School (and More) in Southern Minnesota

Richard Kronick, Independent Scholar, and Ken Allsen, Independent Scholar, Tour Leaders



9:00 a.m.–5:00 p.m. • \$50 • AIA CES: 7 LU • ML2 • Capacity: 35

Participants will see the 1972 house designed by John Howe for himself and his wife Lu, both Taliesin alumni. Next, the group will tour the National Farmers' Bank (1907–08) in Owatonna, designed by Louis Sullivan and George Grant Elmslie. Participants also will see two houses in Owatonna designed by Purcell, Feick & Elmslie, the firm formed when Elmslie left Sullivan in 1909. Before leaving Owatonna, participants will see the Romanesque State School for Dependent and Neglected Children (1887), now an orphanage museum, designed by Clarence Johnston, Minnesota's most prolific architect. From Owatonna, the group will travel to Rochester for a tour of the Mayo Clinic's Plummer Building (1926–28) by the Minneapolis firm, Ellerbe Architects. Finally, the group will travel to the city of Red Wing on the Mississippi River where participants will see Purcell & Elmslie's E.S. Hoyt House (1913) and an Orson Fowler-inspired octagonal house (1857).

TR13

Between the Cores: The Built History of University Avenue

Denis Gardner and Leslie Coburn, Minnesota State Historic Preservation Office, Tour Leaders



9:00 a.m.–5:00 p.m. • \$20 • AIA CES: 7 LU • ML3 • Capacity: 25

In partnership with Vernacular Architecture Forum (VAF).

The earliest major thoroughfare linking Minnesota's principal cities of Saint Paul and Minneapolis, University Avenue is a corridor of many stories. Evidenced by its building stock, its development is one of diversity. From the magnificent Minnesota State Capitol on the east to the University of Minnesota on the west, the places along University Avenue shape a corridor distinct from the downtowns it ties together.

On this tour we will ride the Green Line LRT, departing from Central Station, a 5-block walk from Saint Paul RiverCentre. We will ride the train to the University of Minnesota's West Bank campus and journey back toward Saint Paul, stopping frequently to exit the train and highlight the corridor's varied built environment and cultural communities. Participants should bring money for lunch and snacks along the route. Buy your transit tickets at the platform with your tour group.

TR14**Challenges at Contested Sites: Mississippi River and Fort Snelling**

Pat Nunnally, University of Minnesota, Tour Leader

1:00 p.m.–5:00 p.m. • \$50 • AIA CES: 4 LU • ML3* • Capacity: 25

The confluence of the Mississippi and Minnesota Rivers, “Bdote” to Dakota people and the site of historic Fort Snelling, is arguably the richest and most contested historic landscapes in Minnesota. This tour will explore sites owned and managed by federal, state, and local agencies, and will hear from Dakota people who consider this place their origin point on the earth. Challenges in historic site preservation, management, and interpretation will be reviewed from multiple, sometimes conflicting, perspectives. Despite obstacles and historical distrust, efforts remain to create a just, inclusive, and sustainable future in this place.

This tour complements the SAH Saint Paul Seminar that takes place Saturday morning. (See conference program book for details.)

TR15**University of Minnesota: Renovation and Renewal**

Laura Weber, Minnesota Historical Society, Tour Leader

1:00 p.m.–5:00 p.m. • \$35 • AIA CES: 4 LU • ML2 • Capacity: 25

Located on a bluff above the Mississippi River, the University of Minnesota is a land-grant institution founded in 1851, when Minnesota was still a territory. Tour-goers will experience two National Register districts and recent architect-designed and restored buildings on the University of Minnesota’s Minneapolis East Bank campus. The Old Campus Historic District is based on a design by H.W.S. Cleveland; its buildings represent a proliferation of late nineteenth- and early twentieth-century architectural styles, highlighted by Pillsbury Hall, a stellar example of Richardsonian Romanesque. The Northrop Mall Historic District, a distinguished campus plan envisioned by Cass Gilbert, is the largest Beaux-Arts campus in the state. The tour will visit Northrop Auditorium, with its recently completed major historic restorations. Ringing the district are recent architect-designed buildings and additions by Antoine Predock, Stephen Holl, and William Pedersen, as well as Frank Gehry’s Weisman Art Museum.

TR16**Minneapolis Art Museum Highlights**

Tim Quigley, Quigley Architects, Tour Leader

1:00 p.m.–5:00 p.m. • \$45 • AIA CES: 4 LU • ML2 • Capacity: 20

This combined bus and walking tour will explore four of the finest museums the Twin Cities have to offer. We will start with a brief tour of Frank Gehry’s Weisman Art Museum on the University of Minnesota’s East Bank Campus. We will then visit the American Swedish Institute, housed in a turn of the century mansion with a recent, contrasting contemporary addition by HGA. Nearby, we will visit the comprehensive Minneapolis Institute of Art, built in three phases over the past century by McKim, Mead and White, Kenzo

Tange, and Michael Graves. We will visit the Prairie Gallery and Modernism collection. Lastly, we will tour the Walker Art Center and Sculpture Garden. Designed by Edward Larabee Barnes, this significant museum of contemporary art has recent additions by Herzog & de Meuron and HGA. Price includes admission fee for the American Swedish Institute.

TR17

Cass Gilbert in Saint Paul

Marjorie Pearson, Cass Gilbert Society; Katherine Solomonson, University of Minnesota; and Cindy Stephani, Minnesota Historical Society, Tour Leaders



1:00 p.m.–5:00 p.m. • \$35 • AIA CES: 4 LU • ML2* • Capacity: 27

Cass Gilbert is best known for the many monumental buildings he designed while he was based in New York. But Gilbert started his career in Saint Paul and maintained an office there from 1883 to 1909. At that time, Saint Paul was a rapidly growing western city, a railroad hub, and the gateway to the vast territory stretching from Minnesota to the Pacific. Fresh from MIT and a stint with McKim, Mead & White, Gilbert attracted clients whose ventures contributed to transforming this region. For them, he and his collaborators designed scores of buildings: rustic Shingle-Style houses, sumptuous mansions, churches for several denominations, commercial buildings financed by Boston investors, and civic buildings. You will see many of them on this tour. Highlights will include Gilbert-designed houses, Swedenborgian and Episcopal churches, the Endicott Building, and the building that made his reputation: the Minnesota State Capitol, recently restored.

TR18

From Lager Houses to Craft Brewing: Making Beer in the Twin Cities

Kristin Anderson, Augsburg University, Tour Leader



1:00 p.m.–5:00 p.m. • \$35 • AIA CES: 4 LU • ML2* • Capacity: 25

With abundant water resources, caves for cooling, farmland to produce ingredients, and lots of German immigrants, nineteenth-century Saint Paul and Minneapolis became centers of beer production—and beer consumption. In more recent years, the craft brew industry has become an important part of the local entertainment scene. This tour will visit restored, repurposed, and brand-new centers of beer and brewery culture, including a mid-nineteenth-century lager house and two large industrial brewery complexes, the Schmidt Brewery in Saint Paul and the Grain Belt Brewery in Minneapolis. The tour's last stop is the lively and popular Surly Brewing Company in Minneapolis (HGA, 2014).

Be sure to bring cash/credit card with you to enjoy beer and food with the group post-tour, if your schedule permits.

TR19

Saint John's Abbey and University: Breuer and Beyond

Victoria Young, University of St. Thomas, and Angela Wolf Scott, MacDonald and Mack Architects, Tour Leaders



8:00 a.m.–5:00 p.m. • \$50 • AIA CES: 9 LU • ML3 • Capacity: 40

Settled by German Benedictine monks in the mid-nineteenth century, Saint John's Abbey and University is home to an outstanding collection of significant buildings, including the most works on one site by Marcel Breuer & Associates. Breuer and his team revamped the campus from 1953–1975 as Saint John's positioned itself as not only the largest, but also the most important Benedictine house in the world. This tour will consist of a 1.5-hour coach ride to Saint John's with an introductory lecture on the way. Once on site, we will visit the ten buildings by Breuer's office. We will also view works by other architects who have built at Saint John's in response to Breuer's buildings, including Hugh Newell Jacobsen; Dan Kiley; Rafferty, Rafferty Tollefson; and Vincent James.

TR20

Frank Lloyd Wright: The Willey House in Minneapolis

Steve and Lynette Sikora, The Willey House, Tour Leaders



8:45 a.m.–10:30 a.m. • \$45 • AIA CES: 1.75 LU • ML1* • Capacity: 20

Commissioned by Nancy and Malcolm Willey in 1932, the Willey House helped to re-launch Frank Lloyd Wright's career and ushered in ideas central to his Usonian style. Nancy Willey had read Wright's autobiography and was inspired to inquire whether he was interested in building an \$8,000 house that would be a "creation of art." After significant negotiations with Wright to rein in his proposals for a large house—with its associated costs—the Willeys got the home they wanted. In 1934, they sent a telegram to Wright: "Moved in yesterday. You have made another masterpiece. Thrilling beyond words," and Wright responded, "Here's happiness to the best of clients. No masterpiece too good for them." Or for you. The current owners have lovingly restored the entire home, and they provide an exceptional visit to this exceptional FLW house. Price includes \$30 admission fee.

TR21

Purcell and Elmslie: Masters of Prairie School Architecture

Rolf Anderson, Historical Consultant, Tour Leader



9:00 a.m.–12:00 p.m. • \$50 • AIA CES: 3 LU • ML2* • Capacity: 30

The partnership of William Gray Purcell and George Grant Elmslie became one of the leading architectural practices of the early twentieth century and emerged as the most important Minnesota firm within the Prairie School. The tour will include the exteriors of several buildings by the firm as well as the interiors of two residences,

including the Purcell-Cutts House. Designed in 1913 for Purcell and his family, the Purcell-Cutts House is considered one of the most important examples of Prairie School architecture in the United States. The residence is particularly notable for its innovative spatial planning and extensive ornamentation. Restored by the Minneapolis Institute of Art, the building is now part of their collection. Price includes admission fee for the Purcell-Cutts House.

TR22

Summit Avenue: Saint Paul's Grand Boulevard

Brian Horrigan, Minnesota Historical Society, Tour Leader



9:00 a.m.–12:00 p.m. • \$35 • AIA CES: 3 LU • ML1 • Capacity: 50

Known as one of America's best-preserved Victorian boulevards, Summit Avenue has been a desirable residential address for Saint Paul's well-to-do citizens for a century and a half. Those able to buy the property often also had the means to build spectacular homes, and they hired architects—from Saint Paul and beyond—to design stylish buildings. Summit Avenue is also home to religious buildings, such as Erich Mendelsohn's Mount Zion Temple (1953), cultural centers, and educational institutions, including Macalester College and the University of St. Thomas. This tour will travel along Summit's 4.5 miles, from the Cathedral of St. Paul (Emmanuel Masqueray, 1915) to the Mississippi River, with stops along the way at representative examples of parks, schools, homes, and religious centers.

TR23

The University Grove: Modernist Houses

Dennis Gimmestad, Minnesota Historical Society, Minnesota Department of Transportation (retired), Tour Leader



9:00 a.m.–12:00 p.m. • \$35 • AIA CES: 3 LU • ML2* • Capacity: 25

Located next to the University of Minnesota's Saint Paul campus, the University Grove is an enclave of about 100 houses built for the institution's faculty and staff, primarily between 1929 and the 1970s. The land belongs to the university, leased for a nominal annual fee, and the residents were required to build architect-designed homes on their leased lots. The result is a small neighborhood that *The New York Times* once called "a living time capsule of vernacular modern architecture in America." Included in the Grove are homes by regional modernists including Vienna-born and MIT-educated Lisl Close and Cranbrook-trained Ralph Rapson.

TR24

Along the Mississippi: Past, Present, and Future

National Park Service Staff, Tour Leaders



9:00 a.m.–5:00 p.m. • \$70 • AIA CES: 8 LU • ML2 • Capacity: 25

Designated as the Mississippi National River and Recreation Area, the 72-mile stretch of the Mississippi at the Twin Cities offers a more dramatic change of character than anywhere else along its entire 2,300-mile length. Entering Minneapolis as a modest prairie river, it plunges over St. Anthony Falls (the river's only true waterfall), and

passes through a deep, wooded gorge before emerging as a large floodplain river as it exits Saint Paul. With layers of natural, sacred, industrial, and recreational meaning and use, this varied segment of the river provides a rich space for study and exploration. From transportation and recreation sites in Saint Paul to Fort Snelling (1820), the tour will travel upriver to the historic milling district around St. Anthony Falls in Minneapolis, seeing examples of ruins and renovations, including Mill Ruins Park, the Pillsbury A-Mill (1881), and the massive Stone Arch Bridge (1883), as well as views of Jean Nouvel's nearby Guthrie Theater (2006). Price includes admission fee for two Minnesota Historical Society facilities.

This tour complements the SAH Saint Paul Seminar that takes place Saturday morning. (See conference program book for details.)

TR25

Twin Cities Parks: Landscape Architecture for the West

Frank Edgerton Martin, Historical Consultant, Tour Leader



9:00 a.m.–5:00 p.m. • \$50 • AIA CES: 8 LU • ML1 • Capacity: 40

The Twin Cities are a living document of nineteenth-century landscape, architectural, and planning ideals applied to the “Northwest Frontier.” Taking advantage of opportunities provided by distinctive topography, much of the local park and parkway system was designed or influenced by Horace W. S. Cleveland, beginning in the early 1870s. In addition to the lake- and river-based parks such as Como Regional Park in Saint Paul and Minnehaha Falls in Minneapolis, the tour will visit St. Anthony Park, a Cleveland-designed garden suburb. For much of the day's travels, we will navigate around the cities on the ‘Grand Rounds’ parkway systems of Saint Paul and Minneapolis. On our return to the RiverCentre, we will see the magnificent Highland Park Water Tower, designed by Clarence “Cap” Wigington.

TR26

Modernism in Minnesota

Todd Grover, MacDonald and Mack Architects, Tour Leader



9:00 a.m.–5:00 p.m. • \$50 • AIA CES: 8 LU • ML2 • Capacity: 25

Sometimes considered “flyover” county, Minnesota persisted in carving out its place within the landscape of architectural prominence. The height of Modernism saw no difference in this persistence, which yielded a significant list of renowned designers including Philip Johnson, Eliel and Eero Saarinen, Minoru Yamasaki, Ralph Rapson, Gunnar Birkerts, Lawrence Halprin, and M. Paul Friedberg. These designers, alongside their very talented local counterparts, created a collection of Modern buildings that rival those across the country. This bus tour will explore some of the prominent architectural and landscape works around the Twin Cities that help illustrate the story of Modernism in Minnesota.

TR27–29

Frank Lloyd Wright: The Willey House in Minneapolis

Steve and Lynette Sikora, The Willey House, Tour Leaders



Each tour: \$45 • AIA CES: 1.75 LU • ML1* • Capacity: 20

10:00 a.m.–11:45 a.m. (TR27)

11:15 a.m.–1:00 p.m. (TR28)

12:30 p.m.–2:15 p.m. (TR29)

Commissioned by Nancy and Malcolm Willey in 1932, the Willey House helped to re-launch Frank Lloyd Wright's career and ushered in ideas central to his Usonian style. Nancy Willey had read Wright's autobiography and was inspired to inquire whether he was interested in building an \$8,000 house that would be a "creation of art." After significant negotiations with Wright to rein in his proposals for a large house—with its associated costs—the Willeys got the home they wanted. In 1934, they sent a telegram to Wright: "Moved in yesterday. You have made another masterpiece. Thrilling beyond words," and Wright responded, "Here's happiness to the best of clients. No masterpiece too good for them." Or for you. The current owners have lovingly restored the entire home, and they provide an exceptional visit to this exceptional FLW house. Price includes \$30 admission fee.



Frank Lloyd Wright, Nancy and Malcolm Willey House, Minneapolis, 1934. Photo from *SAH Archipedia*, courtesy of Steve Sikora.



Palmyra, Roman Arch (220 CE), by Lisa D. Schrenk, 2010.

**SAFEGUARD YOUR BORN-DIGITAL IMAGES.
SAHARA IS A TRUSTED DIGITAL ARCHIVE.**

sah.org/sahara

SAHARA
SOCIETY OF ARCHITECTURAL HISTORIANS
ARCHITECTURE RESOURCES ARCHIVE

SOCIETY OF
ARCHITECTURAL
HISTORIANS



Cincinnati Museum Center by Richard W. Burry - Volunteer Photography Group

**TEACHING AMERICAN ARCHITECTURE?
SAH ARCHIPEDIA IS A READY RESOURCE.**

sah-archipedia.org

SOCIETY OF ARCHITECTURAL HISTORIANS
SAHARCHIPEDIA

SOCIETY OF
ARCHITECTURAL
HISTORIANS

SAVE THE DATES

Upcoming SAH Annual International Conferences



SOCIETY OF
ARCHITECTURAL
HISTORIANS

PROVIDENCE
APRIL 24–28, 2019

72ND ANNUAL
INTERNATIONAL
CONFERENCE

Call for Papers Deadline
June 5, 2018

Early Registration
Jan 8, 2019–Feb 19, 2019

sah.org/2019



SOCIETY OF
ARCHITECTURAL
HISTORIANS

SEATTLE
APR 29–MAY 3, 2020

73RD ANNUAL
INTERNATIONAL
CONFERENCE

Call for Sessions
Oct 2, 2018–Jan 15, 2019

Call for Papers
April 3, 2019–June 5, 2019

sah.org/2020

SOCIETY OF
ARCHITECTURAL
HISTORIANS

1365 N Astor Street
Chicago, Illinois 60660
sah.org | [@sah1365](https://twitter.com/sah1365)